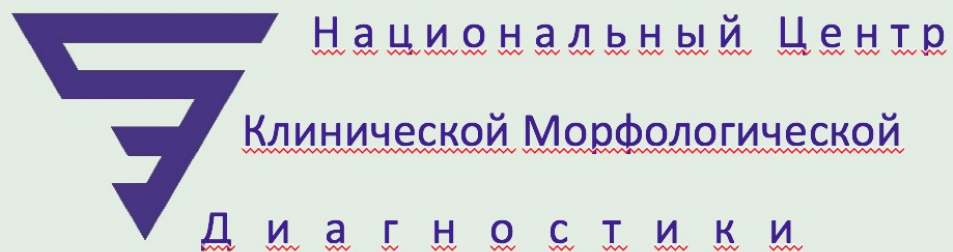


# Поражение ткани почек при системной красной волчанке



Санкт-Петербург

*Воробьева О.А.*



# Клинический диагноз СКВ



**I. Световая микроскопия → Гистологический рисунок**  
Основа(!) дальнейших диагностических рассуждений



Первичный дифференциально-диагностический ряд



**II. Иммунофлюоресценция / Иммуногистохимия**  
*Состав и локализация повреждающего агента*  
Механизм повреждения → терапевтический подход



ГИСТОЛОГИЧЕСКОЕ ЗАКЛЮЧЕНИЕ (I & II)

**Терапевтическое решение**

**III. Электронная микроскопия**  
*Ультраструктура*  
- Уточнение/дополнение к установленному диагнозу  
- Случайные находки



ГИСТОЛОГИЧЕСКОЕ ЗАКЛЮЧЕНИЕ (I & II & III)

## СКВ – частое вовлечение ткани

### почек:

- Все компартменты ткани почки
- Широкая вариабельность гистологической картины
- Неоднородность повреждения
- Трансформация изменений с течением времени
- Нефробиопсия → «почечный» диагноз, динамика, прогноз, терапия

Доклад Воробьевой О.А.

Межрегиональная научно-практическая конференция «Междисциплинарные проблемы ревматологии и ревматологии» посвященная 80-летию КрасГМУ.

(VIII региональная конференция РД)

в Сибирском Федеральном Округе

V Енисейский форум ревматологов

09-10 сентября 2021, г. Красноярск



## Lupus-нефрит:

Развивается в ≈60% случаев СКВ

Из них, ≈10%-20% прогрессируют в тХПН

Доклад Воробьевой О.А

## Lupus-нефрит (2004):

- I. Минимальный
- II. Мезангиопролиферативный
- III. Фокальный (A/C)
- IV. Диффузный (A/C; G/S)
- V. Мембранозный (V; V+III; V+IV)
- VI. Склерозирующий

Lupus-нефрит  
(I-VI классы)

III и IV классы  
оказались  
наиболее спорными  
с позиций клинико-  
анатомических  
корреляций

Поражение  
сосудов

- Lupus-васкулопатия (ИК+)
- Lupus-васкулит (ИК+)
- «ТМА» (ИК-)
- Склероз

Подоцитопатия

Гистологическая  
картина:  
- БМИ  
- ФСГС  
- Коллапсная ГП

(!) Тубуло-  
интерстициальное  
воспаление

Пересмотр классификации Lupus-нефрита 2018

09-10 сентября 2022, г. Красноярск

✓ Weening JJ, D'Agati VD, Schwartz MM, et al. The classification of glomerulonephritis in SLE revisited. *J Am Soc Nephrol.* 2004; 15: 241–250.

✓ D'Agati VD, Stokes MB. Renal disease in SLE, MCTD, Sjogren's syndrome, and RA. In Jennette JC et al.: *Heptinstall's Path of the kidney.* 7<sup>th</sup> ed. 2014; 560-610.



# Revision of the International Society of Nephrology/Renal Pathology Society classification for lupus nephritis: clarification of definitions, and modified National Institutes of Health activity and chronicity indices

Ingeborg M. Bajema<sup>1</sup>, Suzanne Wilhelmus<sup>1</sup>, Charles E. Alpers<sup>2</sup>, Jan A. Bruijn<sup>1</sup>, Robert B. Colvin<sup>3</sup>, H. Terence Cook<sup>4</sup>, Vivette D. D'Agati<sup>5</sup>, Franco Ferrario<sup>6</sup>, Mark Haas<sup>7</sup>, J. Charles Jennette<sup>8</sup>, Kensuke Joh<sup>9</sup>, Cynthia C. Nast<sup>7</sup>, Laure-Hélène Noël<sup>10</sup>, Emilie C. Rijnink<sup>1</sup>, Ian S.D. Roberts<sup>11</sup>, Surya V. Seshan<sup>12</sup>, Sanjeev Sethi<sup>13</sup> and Agnes B. Fogo<sup>14</sup>



**Table 1 | Phase 1 recommendations for lupus nephritis classification**

Category	Recommendation	Comments on ISN/RPS guidelines
Class II	<b>Definition for mesangial hypercellularity</b> adjusted: Four or more nuclei fully surrounded by matrix in the mesangial area not including the hilar region (A)	Cutoff for mesangial hypercellularity unclear
Class III and IV	<b>The term</b> endocapillary proliferation is replaced by <b>endocapillary hypercellularity</b> (B)	Definition for endocapillary proliferation unclear; the term proliferation was considered imprecise
	<b>The term crescent</b> is used for a lesion consisting of extracapillary hypercellularity, composed of a variable mixture of cells. Fibrin and fibrous matrix may be present; <b>10% or more of the circumference of Bowman's capsule</b> should be involved.	Extracapillary proliferation involving > 25% of the circumference of Bowman's capsule was original cutoff. There were no definitions for fibrous or fibrocellular crescents
	<b>Cellular</b> crescent: <b>more than 75% cells</b> and fibrin and less than 25% fibrous matrix (C)	
	<b>Fibrous</b> crescent: <b>more than 75% fibrous</b> matrix and less than 25% cells and fibrin (D)	
	<b>Fibrocellular</b> crescent: <b>25%–75% cells and fibrin</b> and the remainder fibrous matrix (E)	
	<b>Adhesion</b> : an area of isolated continuity of extracellular matrix material between the tuft and capsule even when the underlying segment does not have overt sclerosis (F)	There was no definition for an adhesion
	<b>Fibrinoid necrosis</b> : fibrin associated with glomerular basement membrane disruption and/or lysis of the mesangial matrix; this lesion <b>does not require the presence of karyorrhexis</b>	There was no definition for fibrinoid necrosis
	<b>Elimination of segmental and global subdivisions of class IV</b>	Definitions for segmental and global were unclear; interobserver variability was large; clinical significance uncertain
	<b>Modification of</b> the NIH lupus nephritis <b>activity and chronicity scoring system</b> (Table 2) to be used instead of the currently used A, C, and A/C parameters	Designation of activity/chronicity through A, C, and A/C considered too broad and nonspecific; preference for a semiquantitative approach to describe active and chronic lesions
Tubulointerstitial lesions	Indicate whether <b>interstitial inflammation</b> occurs <b>in presence or absence of interstitial fibrosis</b>	Lack of cut-off values for reporting the severity of tubulointerstitial lesions



www.kidney-international.org

Reviewing report

# Revision of Nephrology for lupus modified chronicity

Ingeborg M. Bakker  
H. Terence Cooper  
Cynthia C. Nast  
Sanjeev Sethi<sup>13</sup>

Colvin<sup>3</sup>,  
Kensuke Joh<sup>9</sup>,  
Shan<sup>12</sup>,

■-■; <https://doi.org/10.1016/>

**Table 1 | Phase 1 recommendations for lupus nephritis classification**

Category	Recommendation	Comments on ISN/RPS guidelines
Class II	Definition for mesangial hypercellularity adjusted: Four or more nuclei fully surrounded by matrix in the mesangial area not including the hilar region (A)	Cutoff for mesangial hypercellularity unclear
Class III and IV	The term endocapillary proliferation is replaced by endocapillary	Definition for endocapillary proliferation unclear; the term



eting report

www.kidney-internat

**Table 2 | Proposed modified NIH lupus nephritis activity and chronicity scoring system**

Modified NIH activity index	Definition	Score
Endocapillary hypercellularity	Endocapillary hypercellularity in <25% (1+), 25%–50% (2+), or >50% (3+) of glomeruli	0–3
Neutrophils/karyorrhexis	Neutrophils and/or karyorrhexis in <25% (1+), 25%–50% (2+), or >50% (3+) of glomeruli	0–3
Fibrinoid necrosis	Fibrinoid necrosis in <25% (1+), 25%–50% (2+), or >50% (3+) of glomeruli	(0–3) × 2
Hyaline deposits	Wire loop lesions and/or hyaline thrombi in <25% (1+), 25%–50% (2+), or >50% (3+) of glomeruli	0–3
Cellular/fibrocellular crescents	Cellular and/or fibrocellular crescents in <25% (1+), 25%–50% (2+), or >50% (3+) of glomeruli	(0–3) × 2
Interstitial Inflammation	Interstitial leukocytes in <25% (1+), 25%–50% (2+), or >50% (3+) in the cortex	0–3
<b>Total</b>		<b>0–24</b>
Modified NIH chronicity index	Definition	Score
Total glomerulosclerosis score	Global and/or segmental sclerosis in <25% (1+), 25%–50% (2+), or >50% (3+) of glomeruli	0–3
Fibrous crescents	Fibrous crescents in <25% (1+), 25%–50% (2+), or >50% (3+) of glomeruli	0–3
Tubular atrophy	Tubular atrophy in <25% (1+), 25%–50% (2+), or >50% (3+) of the cortical tubules	0–3
Interstitial fibrosis	Interstitial fibrosis in <25% (1+), 25%–50% (2+), or >50% (3+) in the cortex	0–3
<b>Total</b>		<b>0–12</b>

NIH, National Institutes of Health.

Sanjeev Sethi

Modification of the NIH lupus nephritis activity and chronicity scoring system (Table 2) to be used instead of the currently used A, C, and A/C parameters	Designation of activity/chronicity through A, C, and A/C considered too broad and nonspecific; preference for a semiquantitative approach to describe active and chronic lesions
Tubulointerstitial lesions	Indicate whether interstitial inflammation occurs in presence or absence of interstitial fibrosis
	Lack of cut-off values for reporting the severity of tubulointerstitial lesions

https://doi.org/10.1016/



# Пересмотр классификации Lupus-нефрита 2018

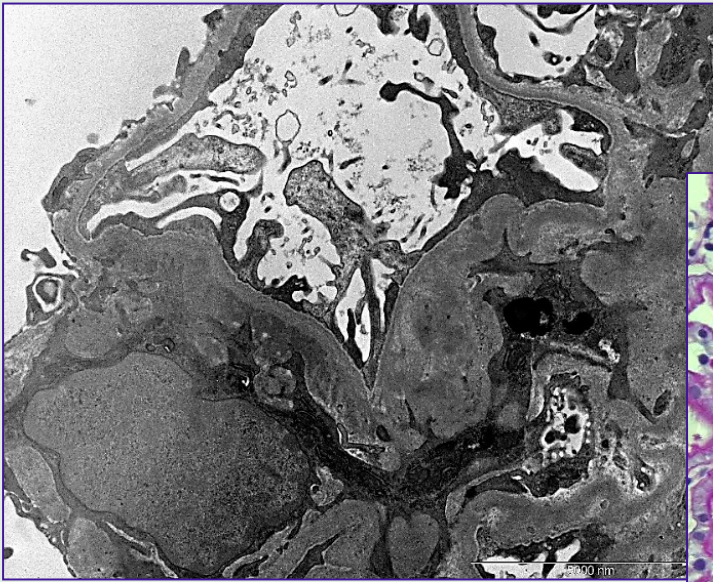
- Определены понятия «мезангиальная гиперклеточность» и «эндокапиллярная гиперклеточность»
- Определено понятие «полулуние» и его стадии (клеточное, фиброзно-клеточное, фиброзное)
- Определены и модифицированы понятия «фибриноидный некроз» и «адгезия»
- Ликвидировано подразделение IV класса на «сегментарный» и «глобальный» варианты
- Отмечена обязательность оценки тубуло-интерстициального воспаления, его тяжести и связи с тубуло-интерстициальным фиброзом
- Модифицирована система подсчета индексов активности и хронизации:
  - Объективизирована балльная оценка
  - Введены дополнительные признаки (кариорексис, фиброзно-клеточные полулуния)

✓ *Bajema IM, Wilhelmus S, Alpers CE, et al. Revision of the ISN/RPS classification for lupus nephritis: clarification of definitions, and modified National Institutes of Health activity and chronicity indices. Kidney International. 2018; 93(4): 789-796.*

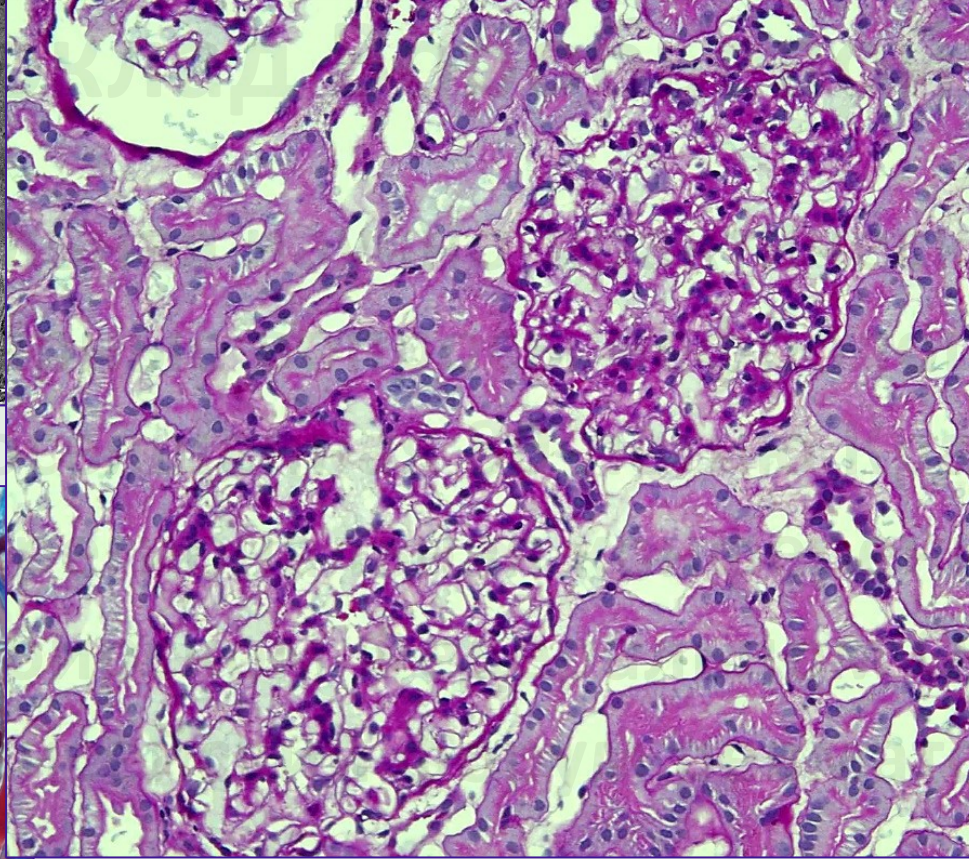




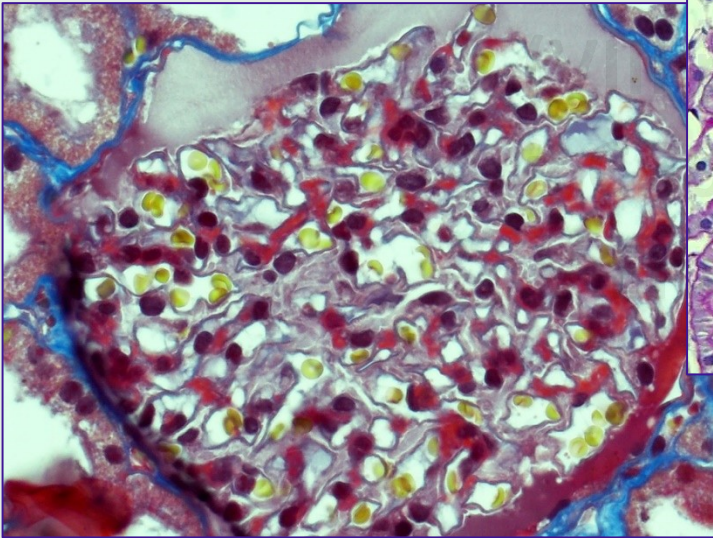
# Класс I



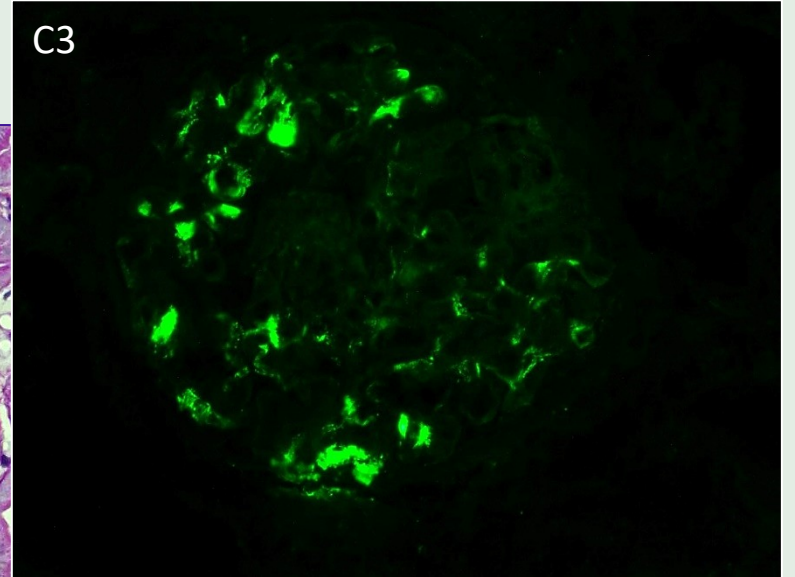
x5K



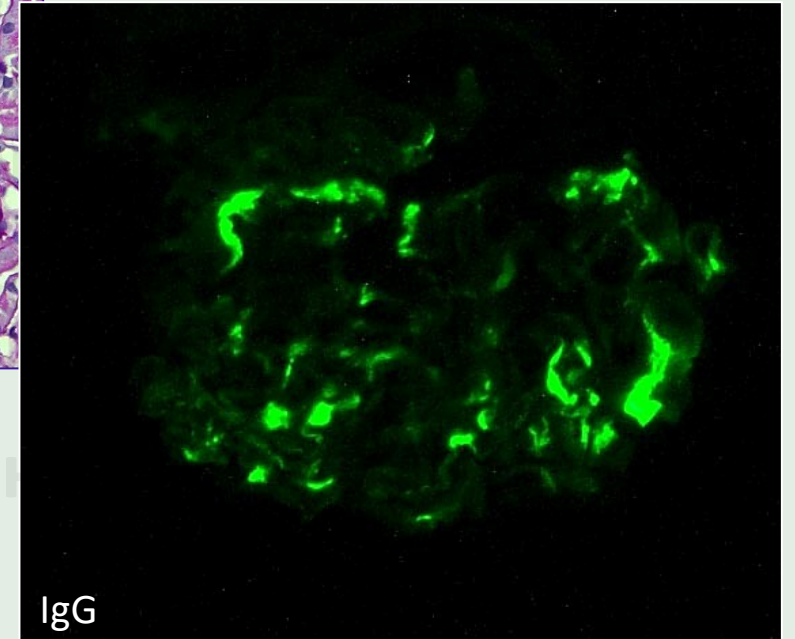
PAS, x200



Masson's, x200



C3



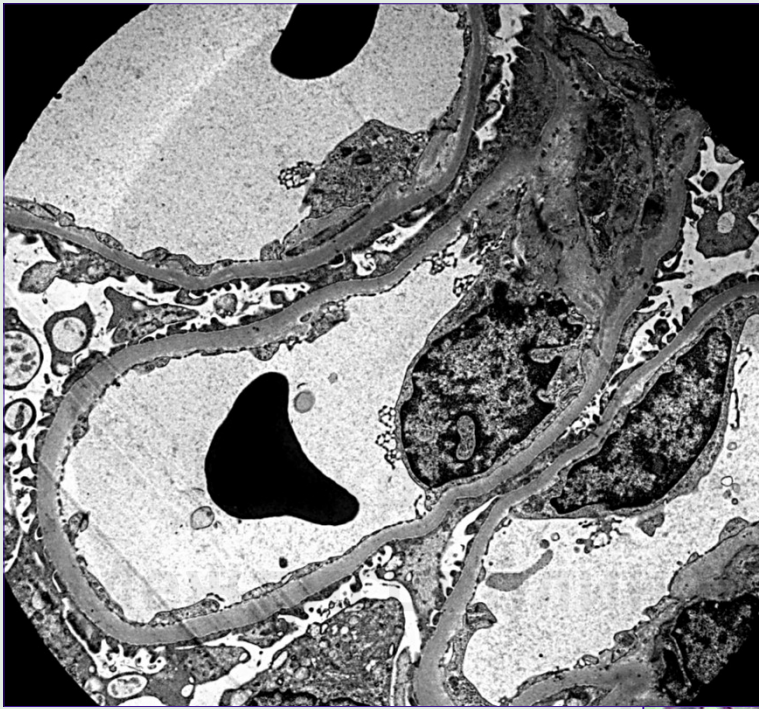
IgG

10 сентября 2021, г. Крас

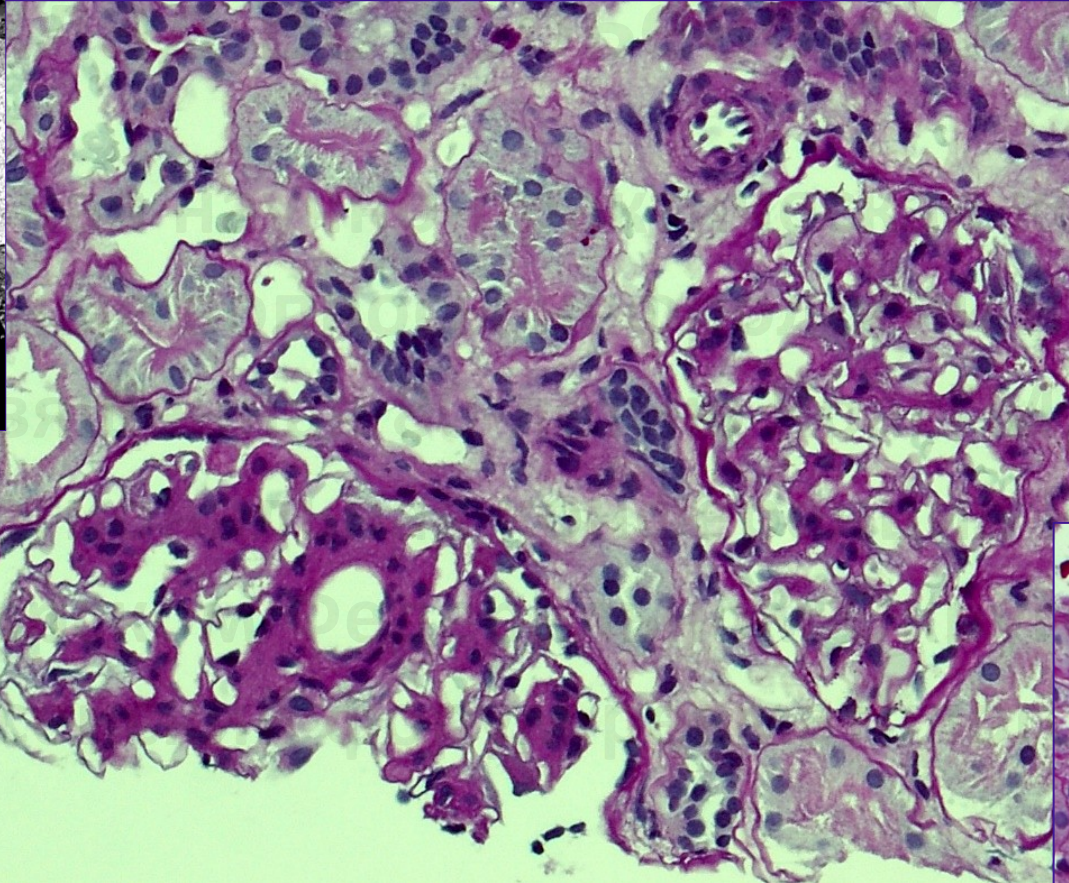




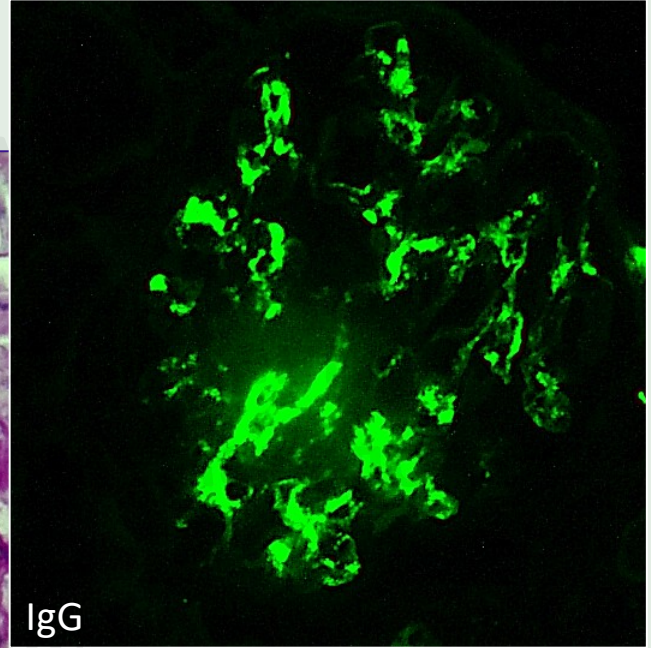
## Класс II



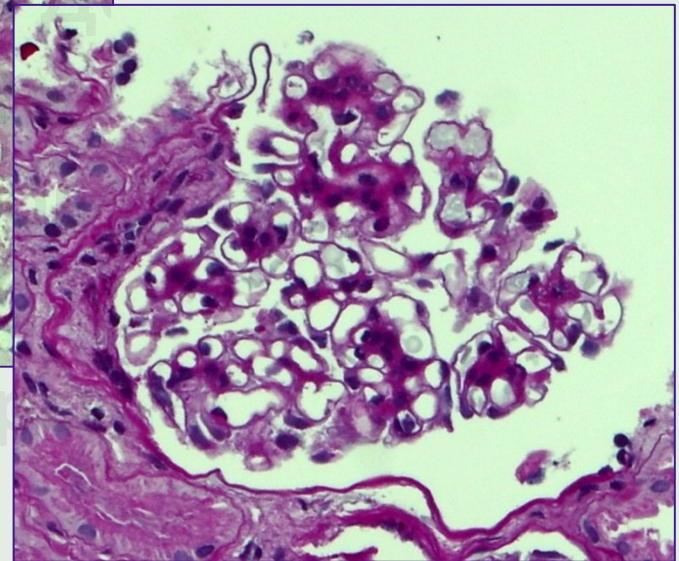
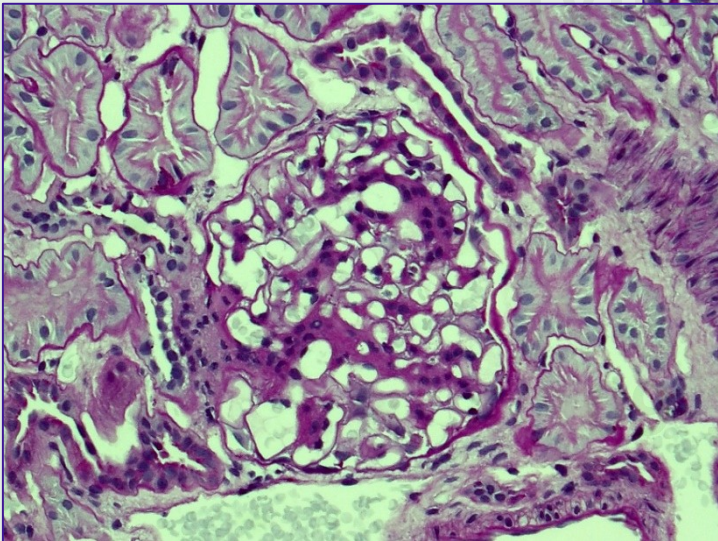
x3K



PAS, x200



IgG

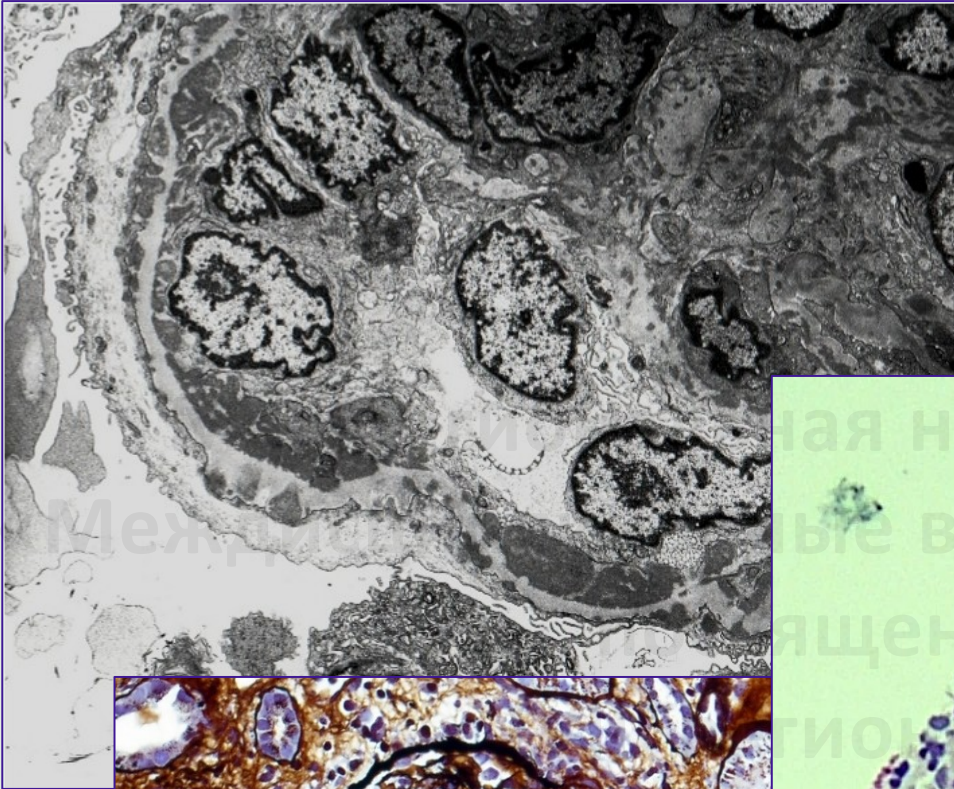




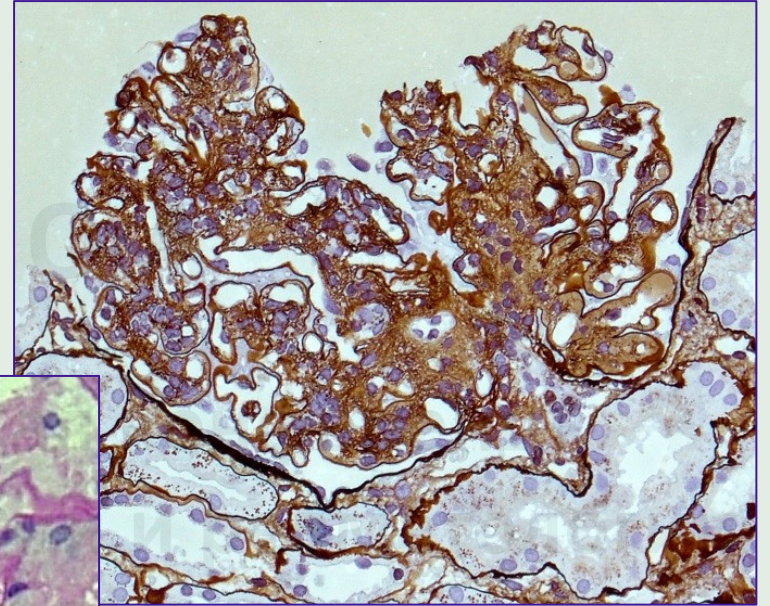


# Класс III/IV

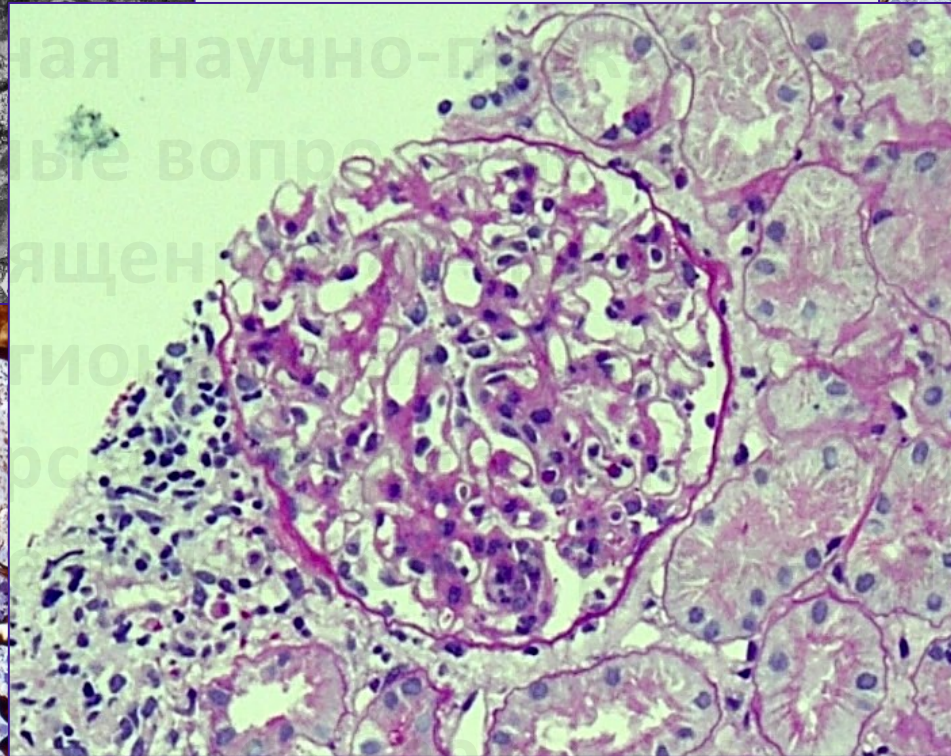
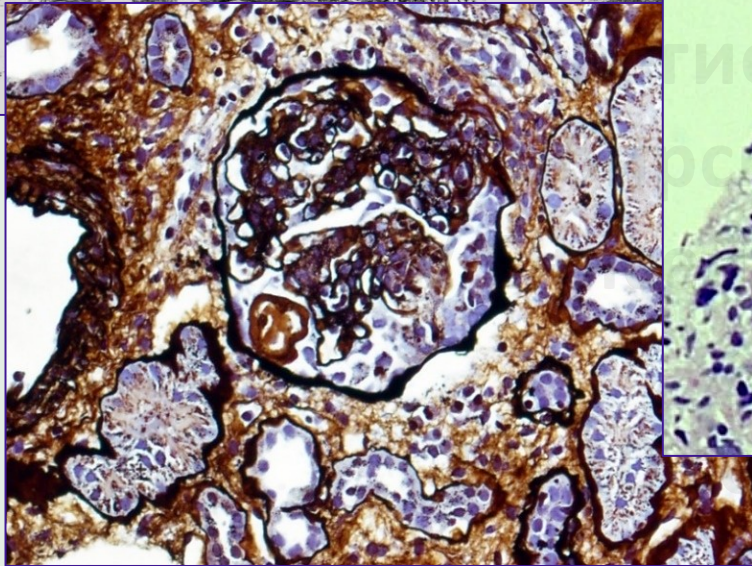
Воробьевой



х3К

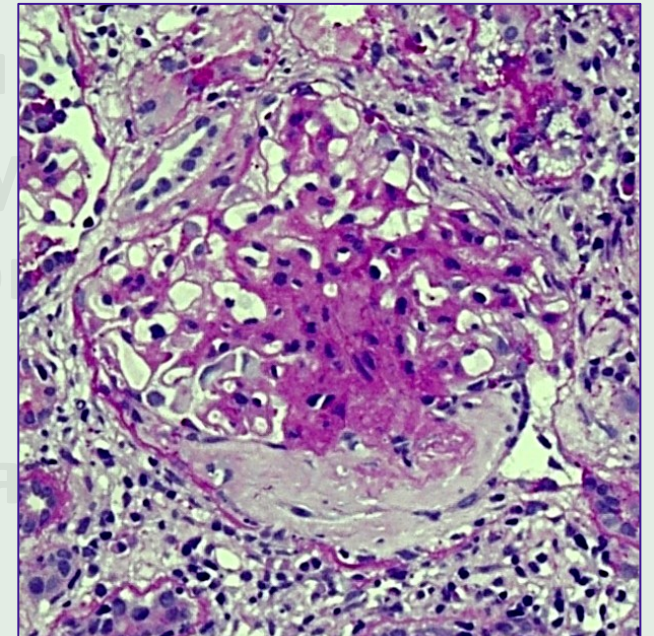


Jones', x200



Jones', x200

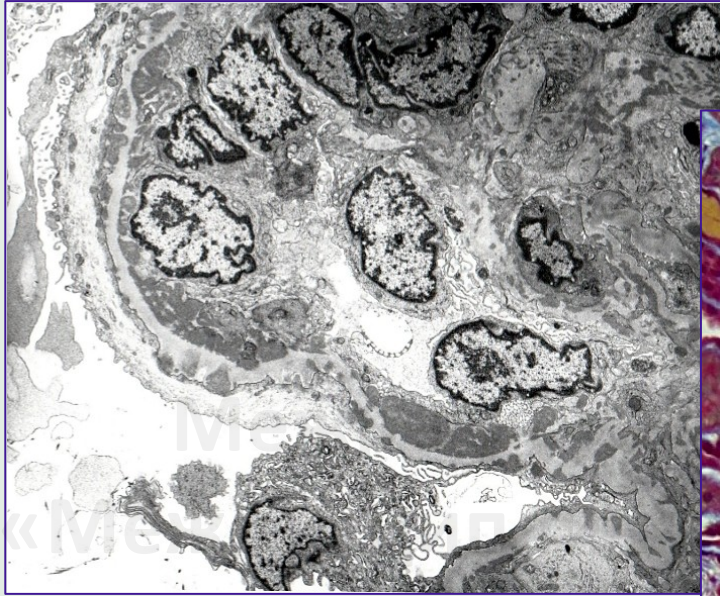
PAS, x200



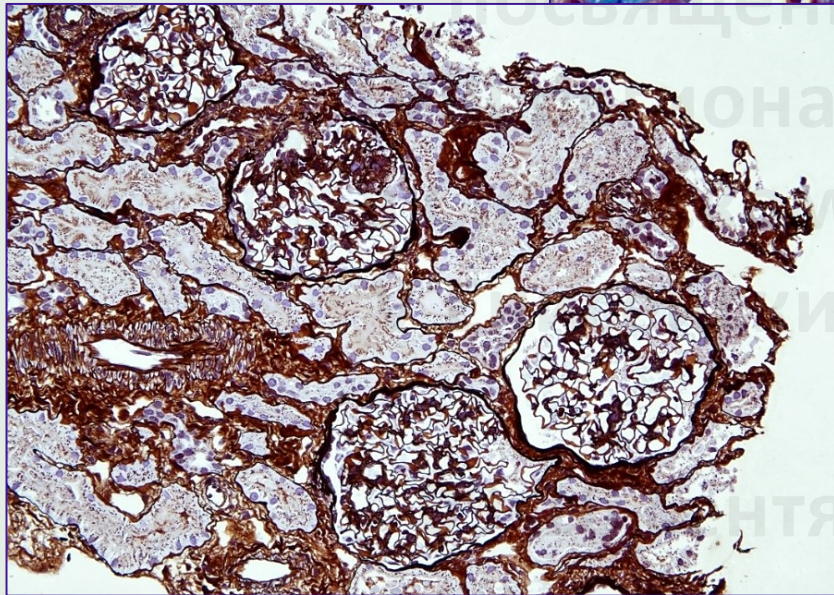
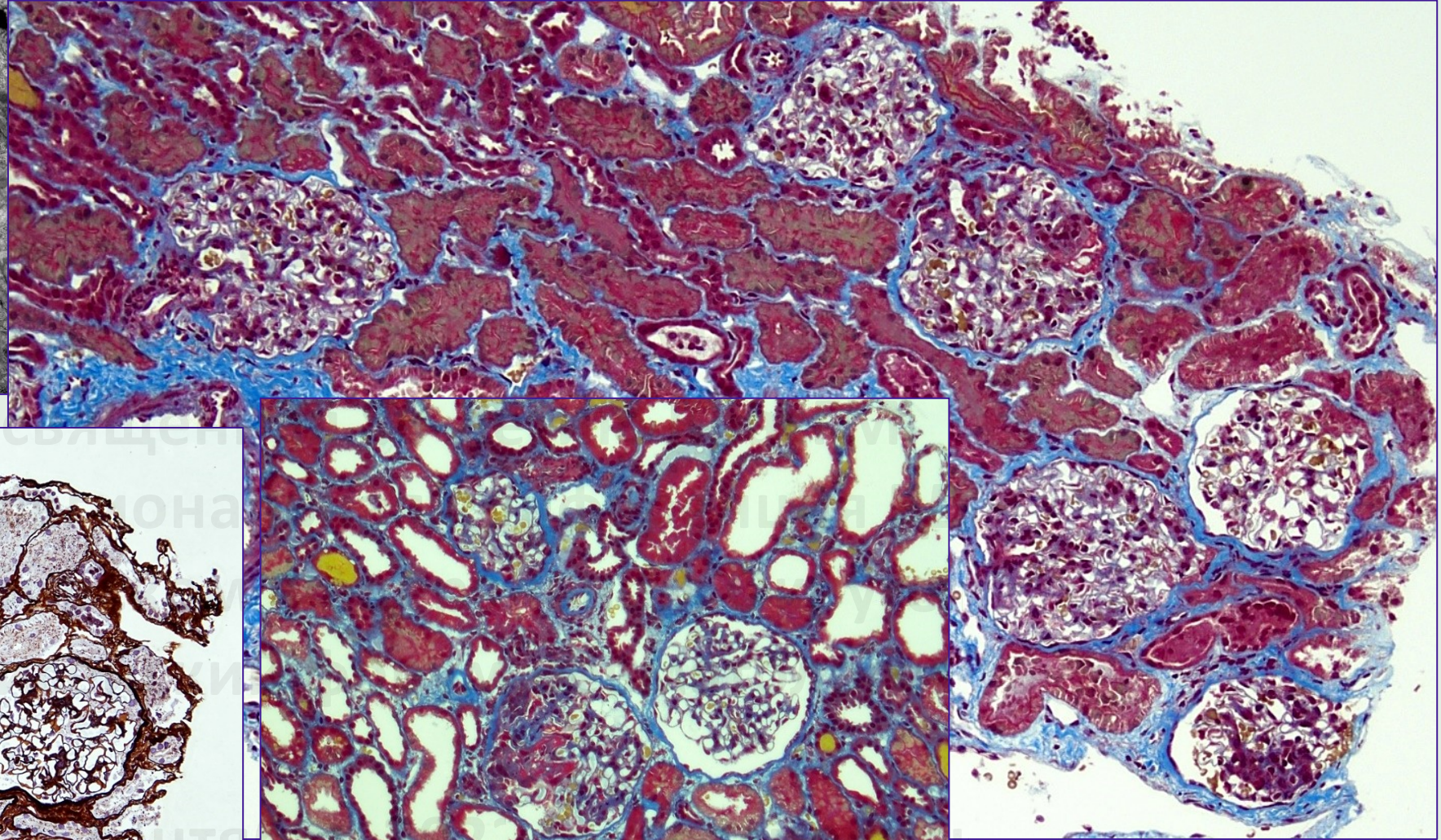




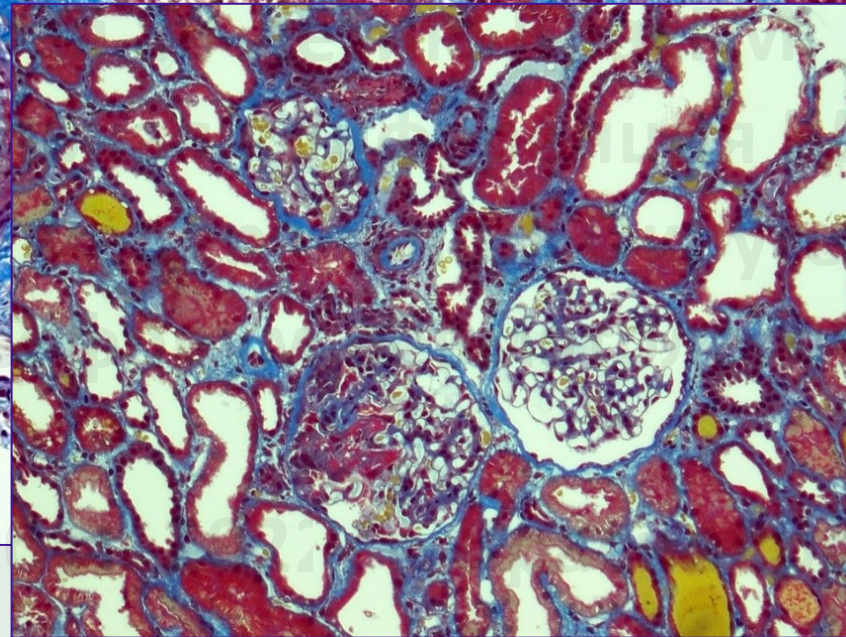
# Класс III



x3K



Jones', x100

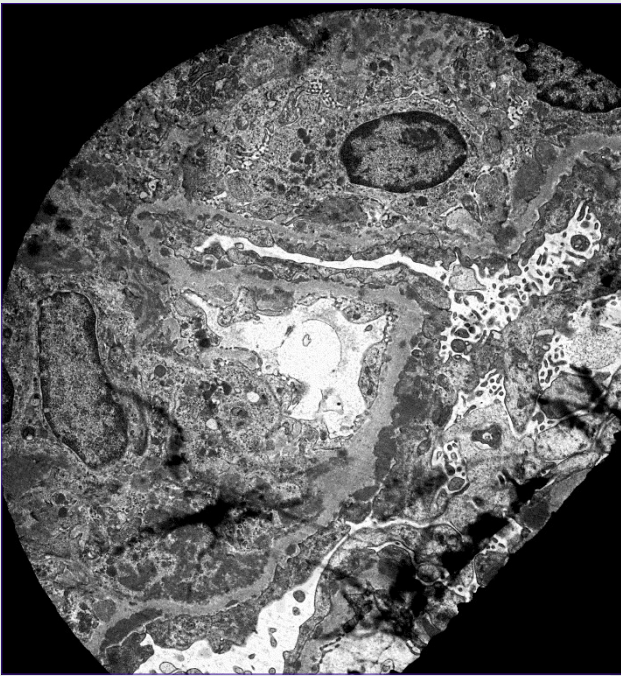


Masson's, x100

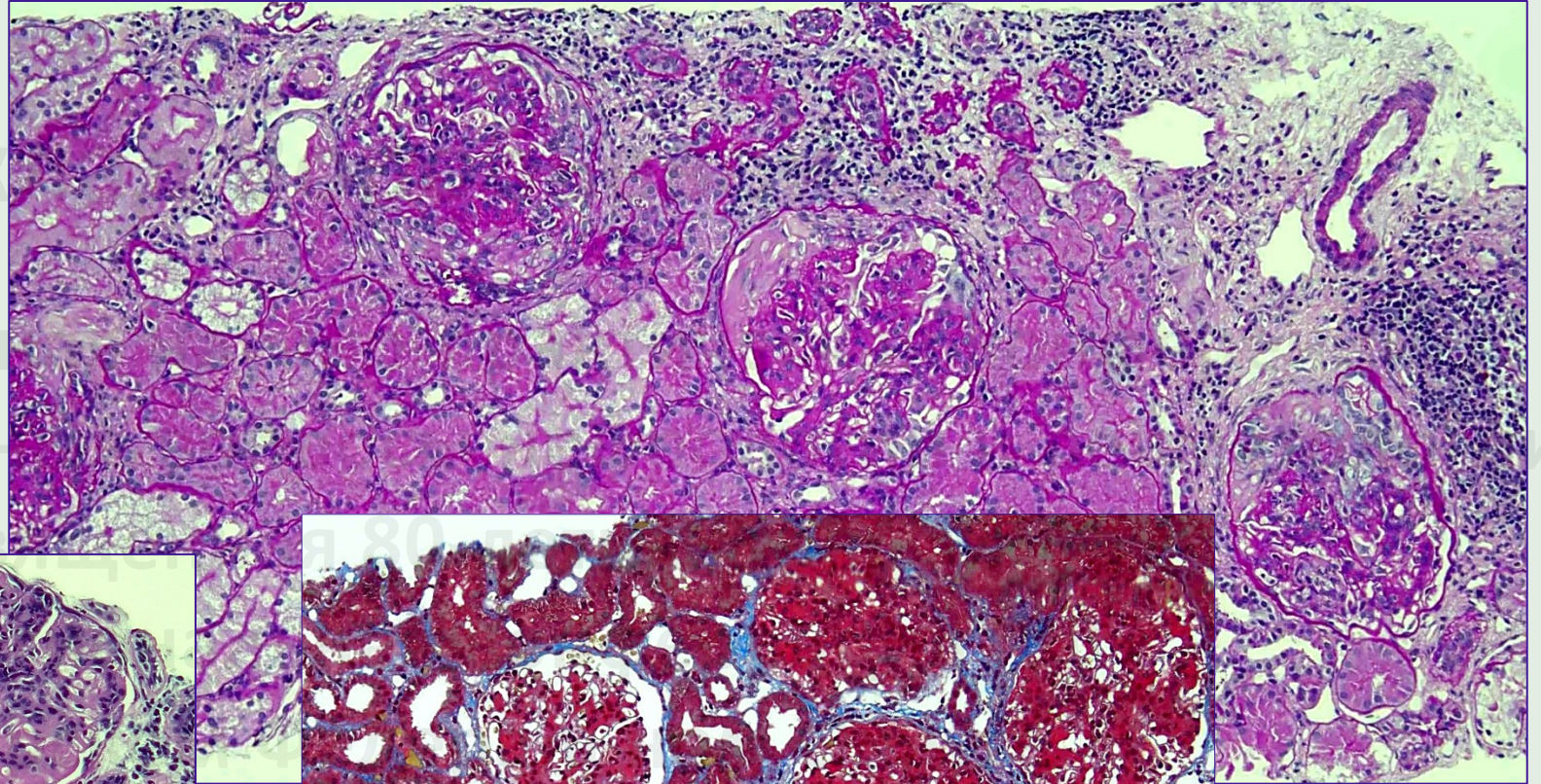




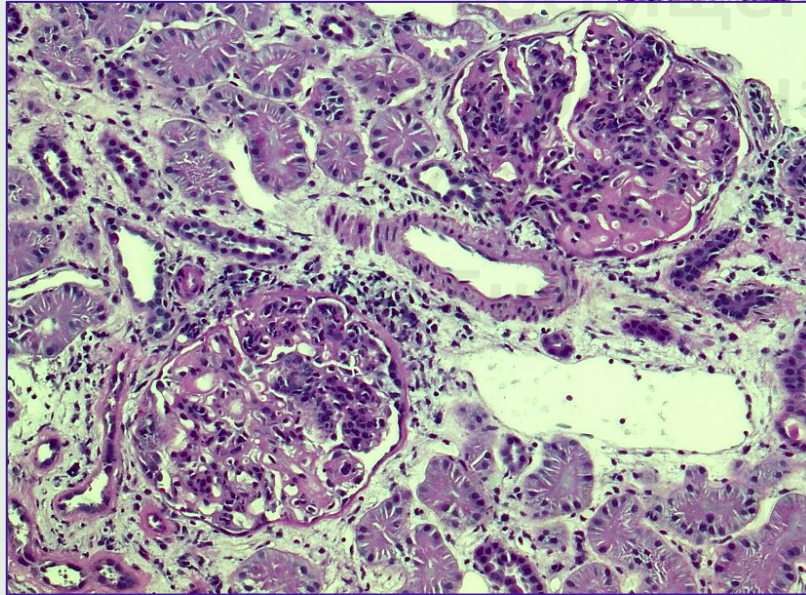
## Класс IV



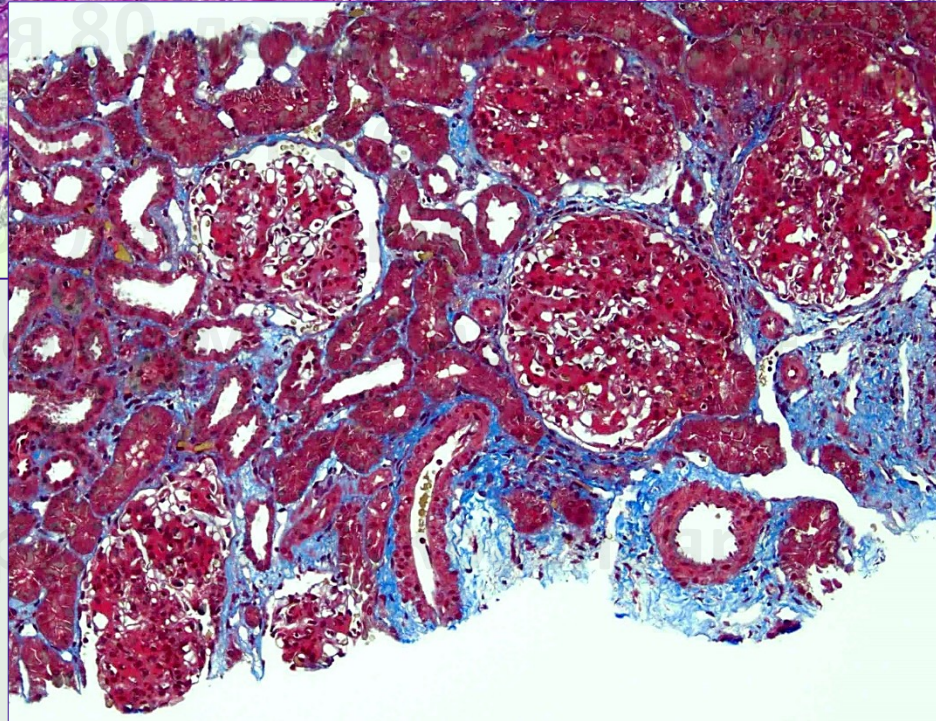
x1,2K



PAS, x100



PAS, x200

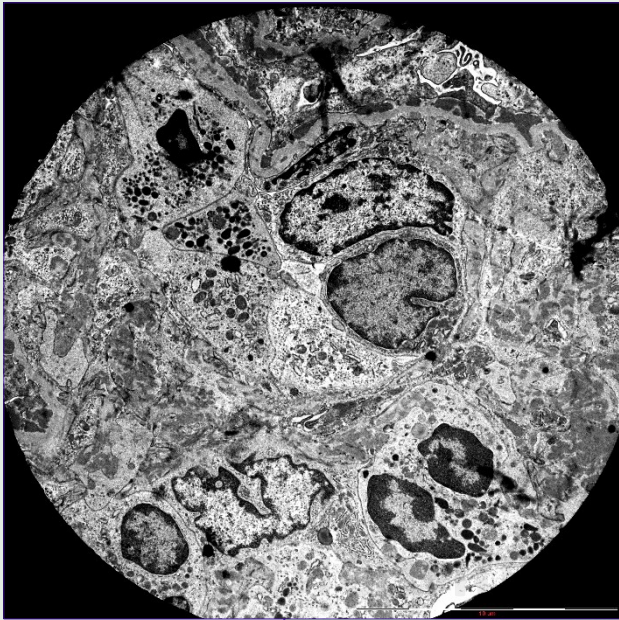


Masson's, x100

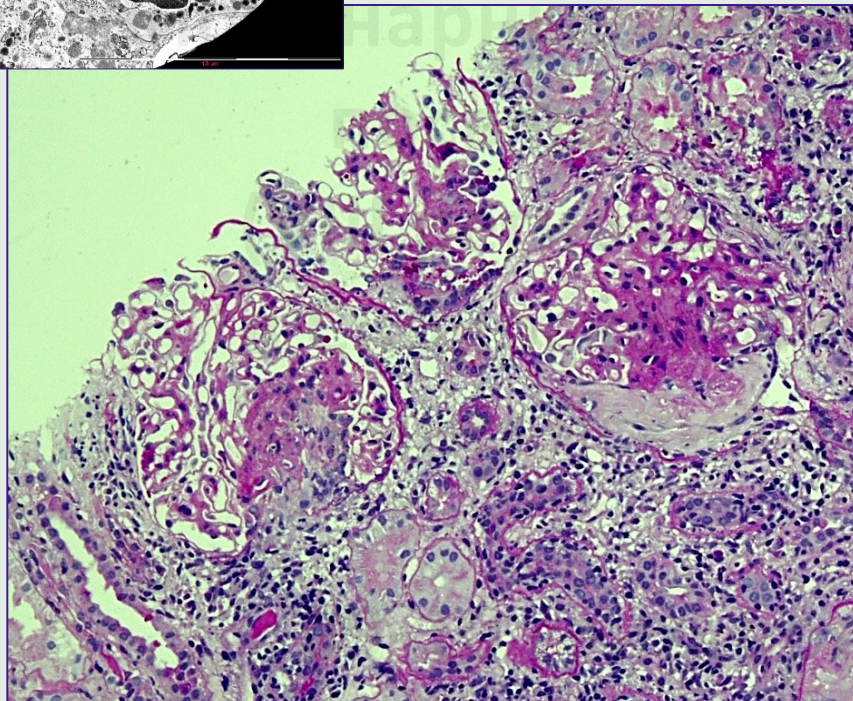




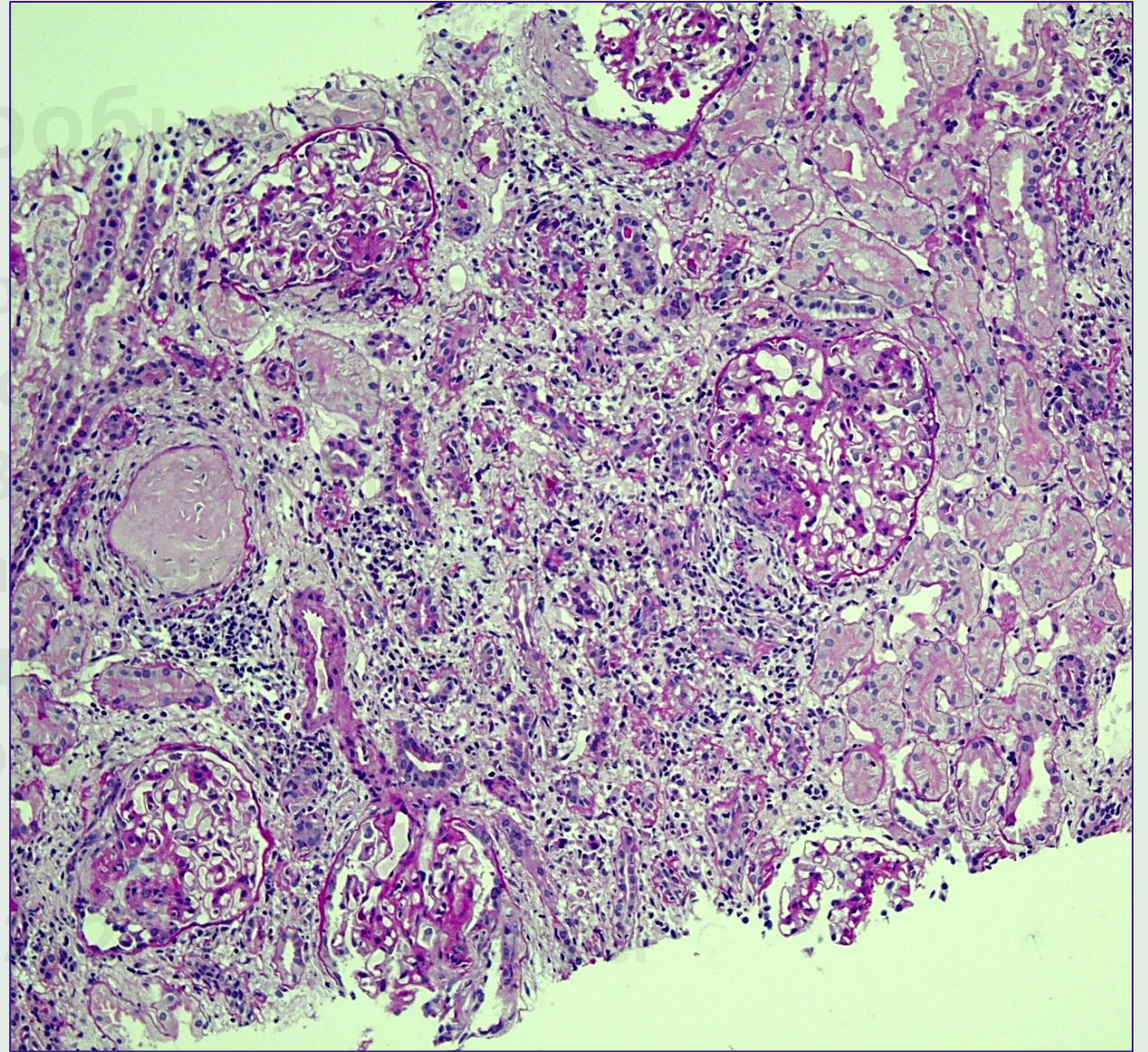
## Класс IV



х3К



PAS, x200



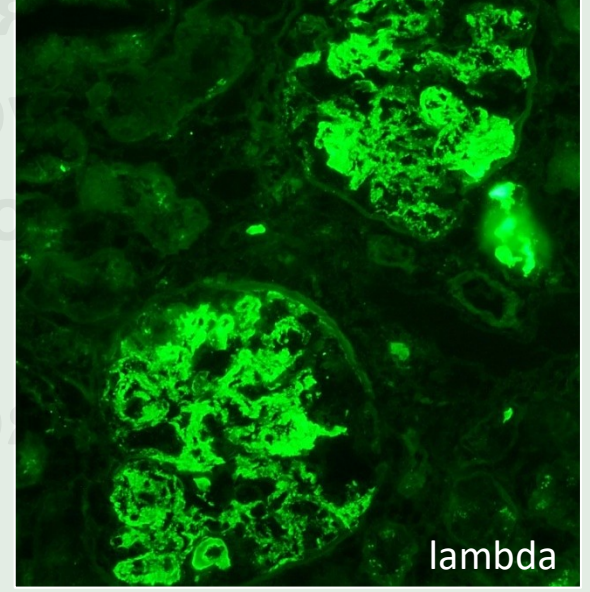
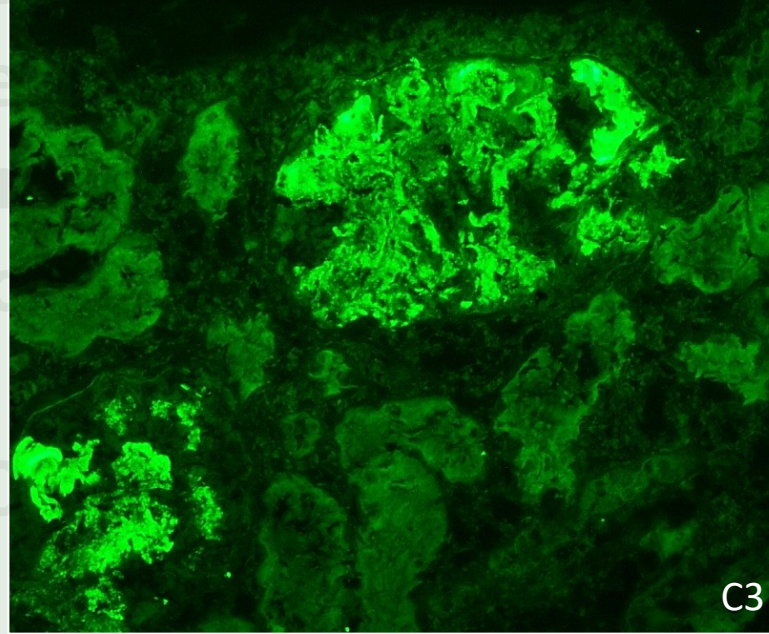
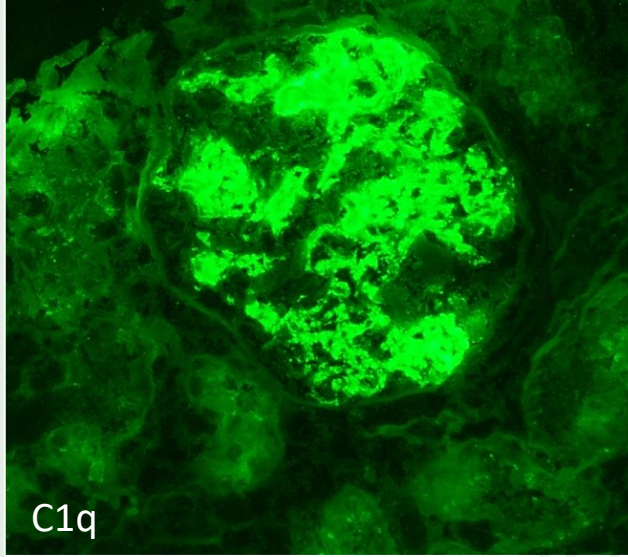
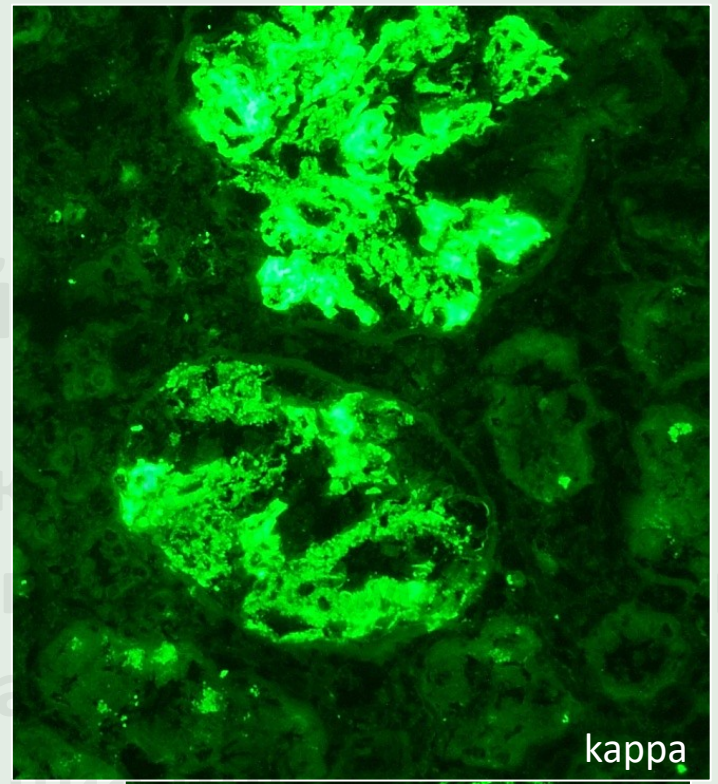
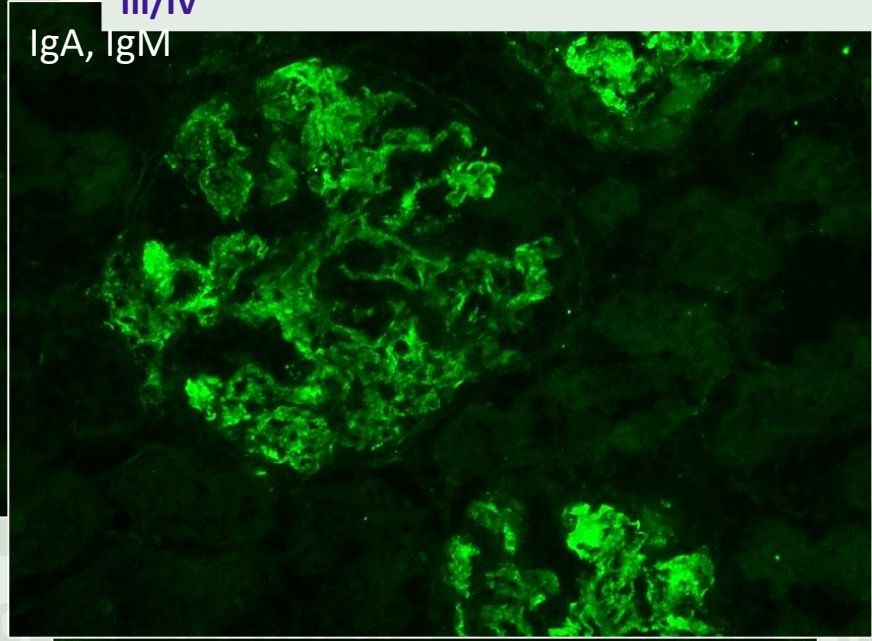
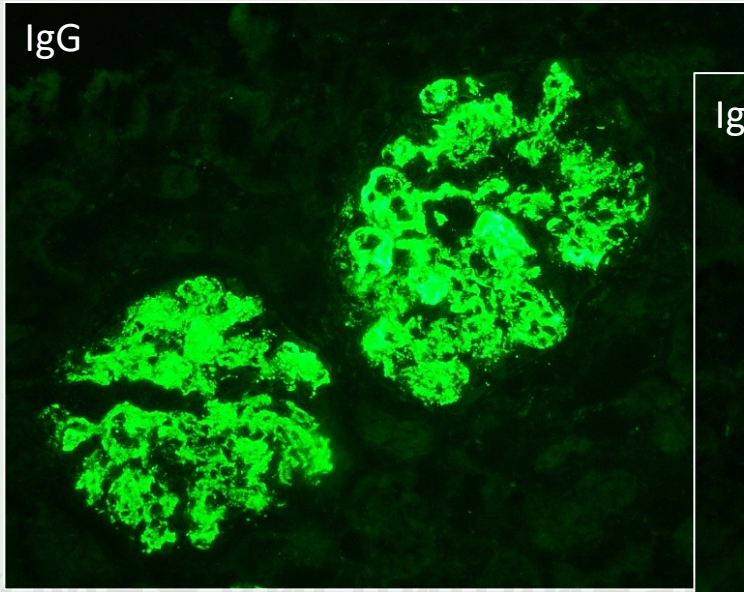
PAS, x100

Доклад Воробьева  
научно-исследовательский центр  
патологии





Иммунокомпозиция "full-house", классы III/IV

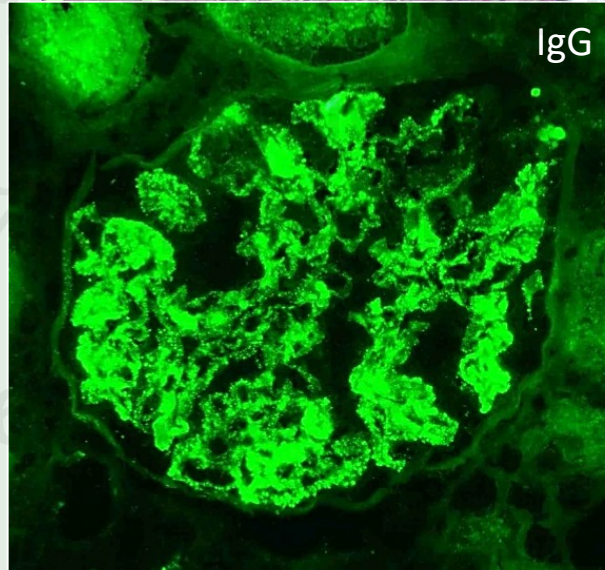
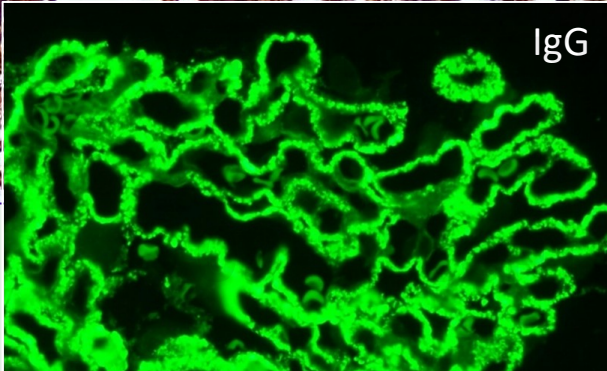
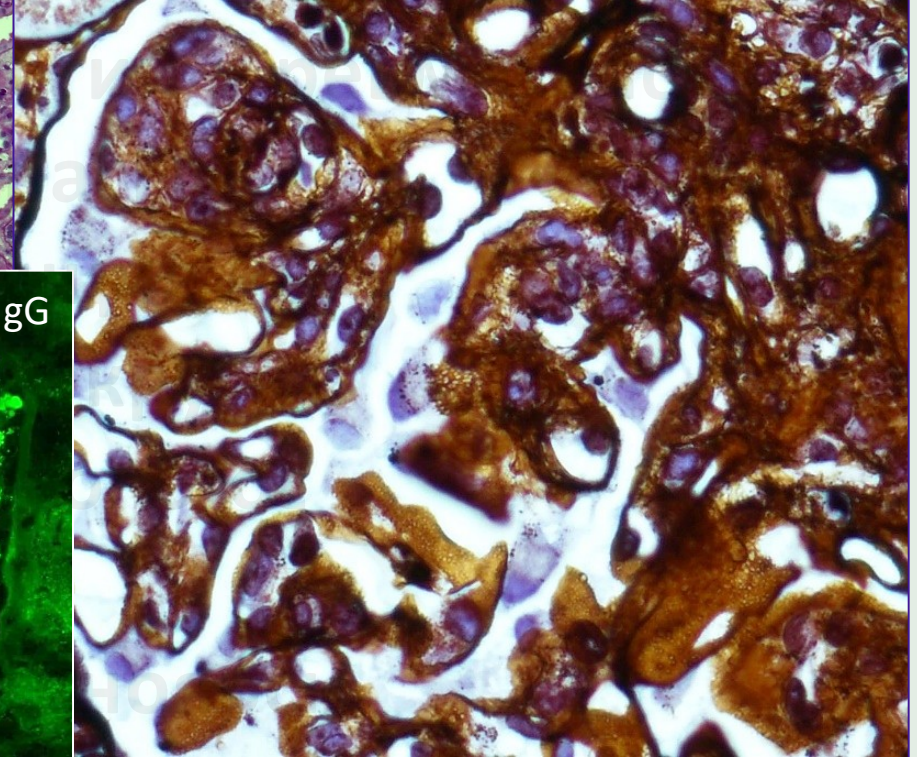
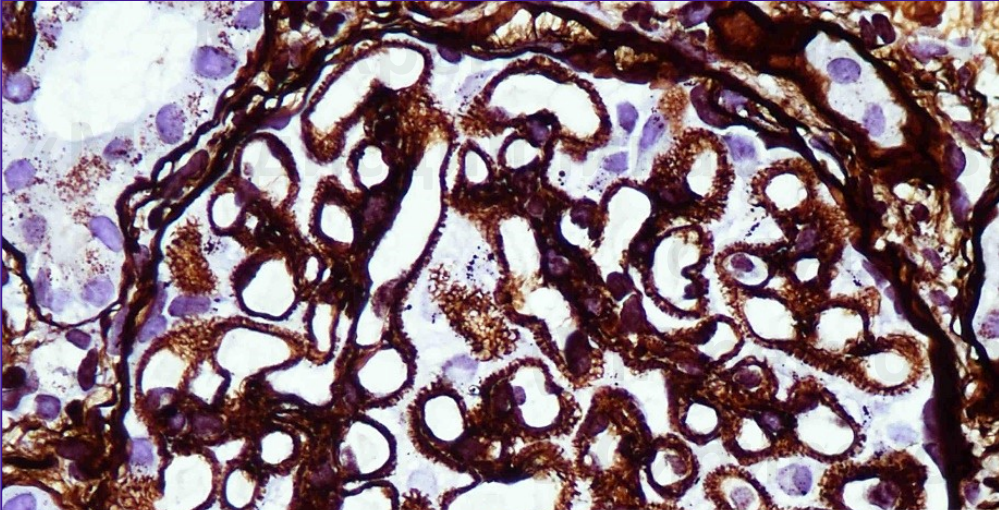
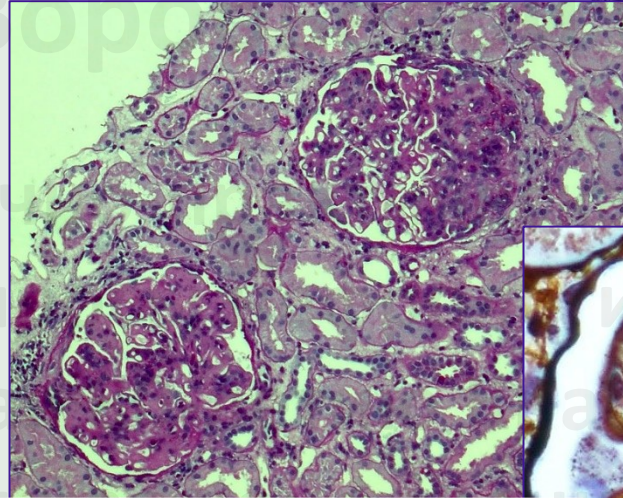
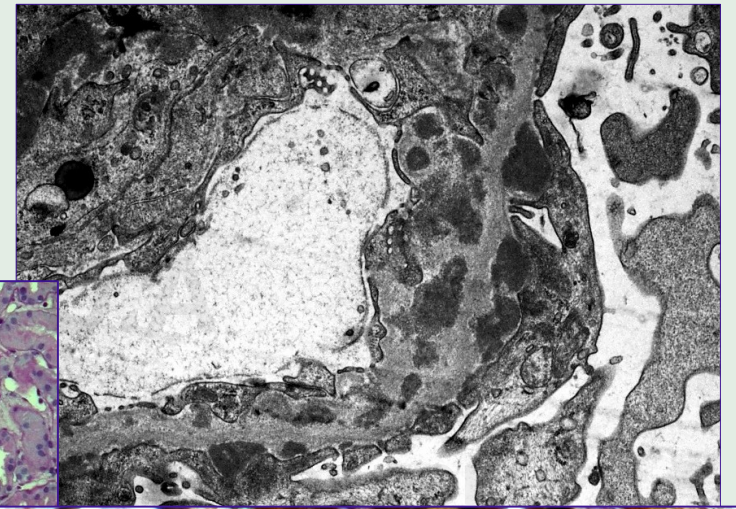
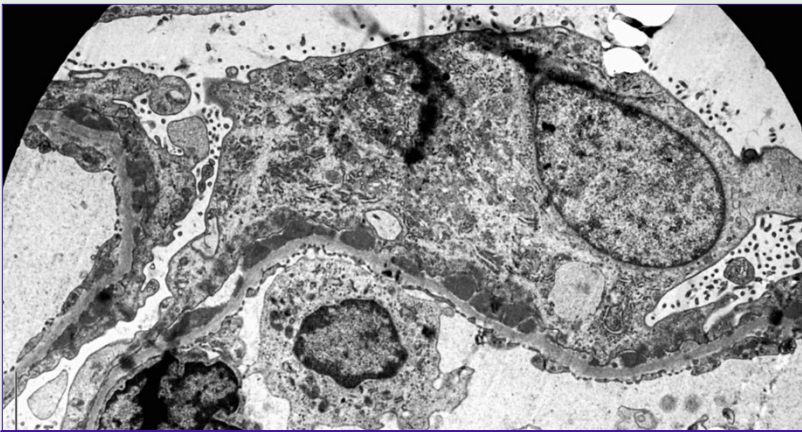






# Класс V

V или V+III/IV

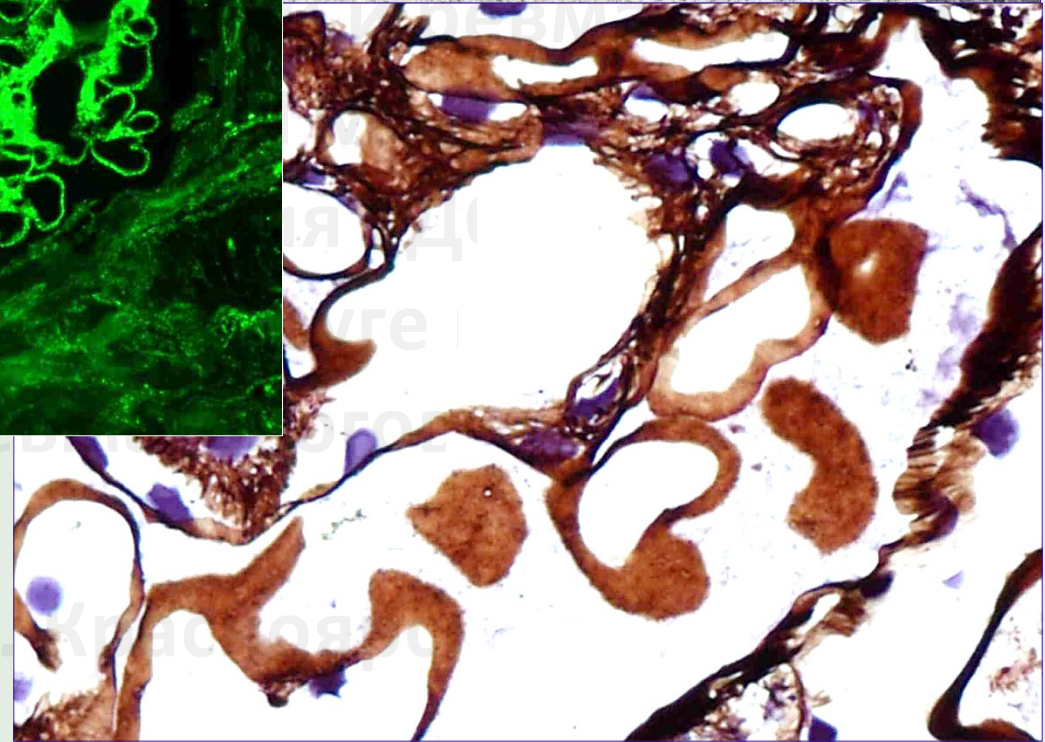
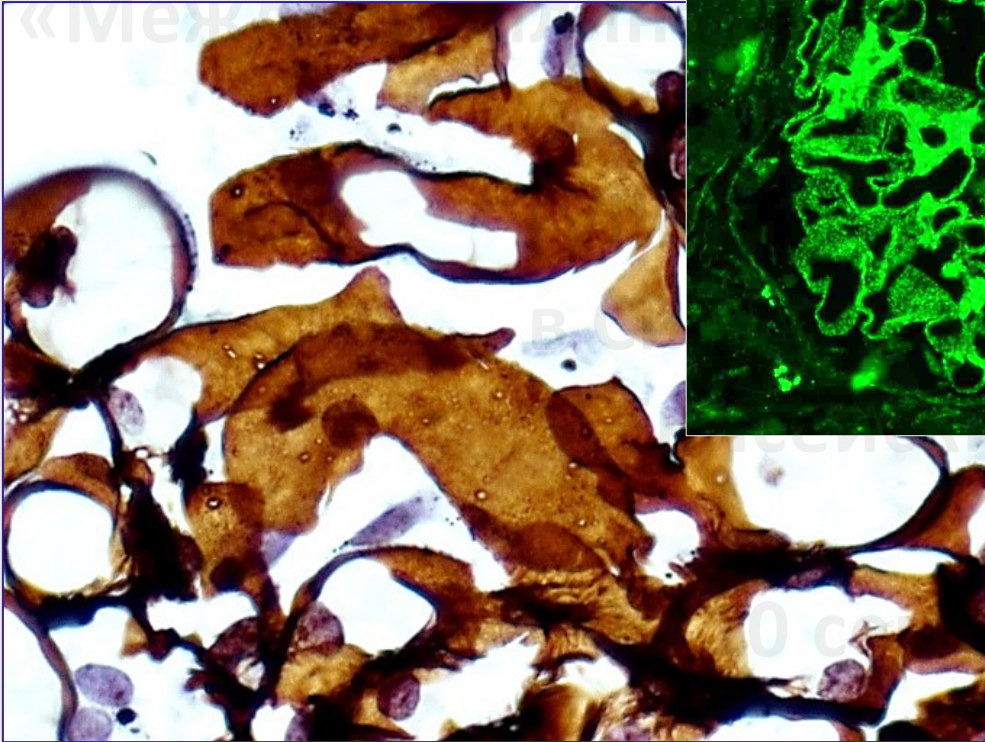
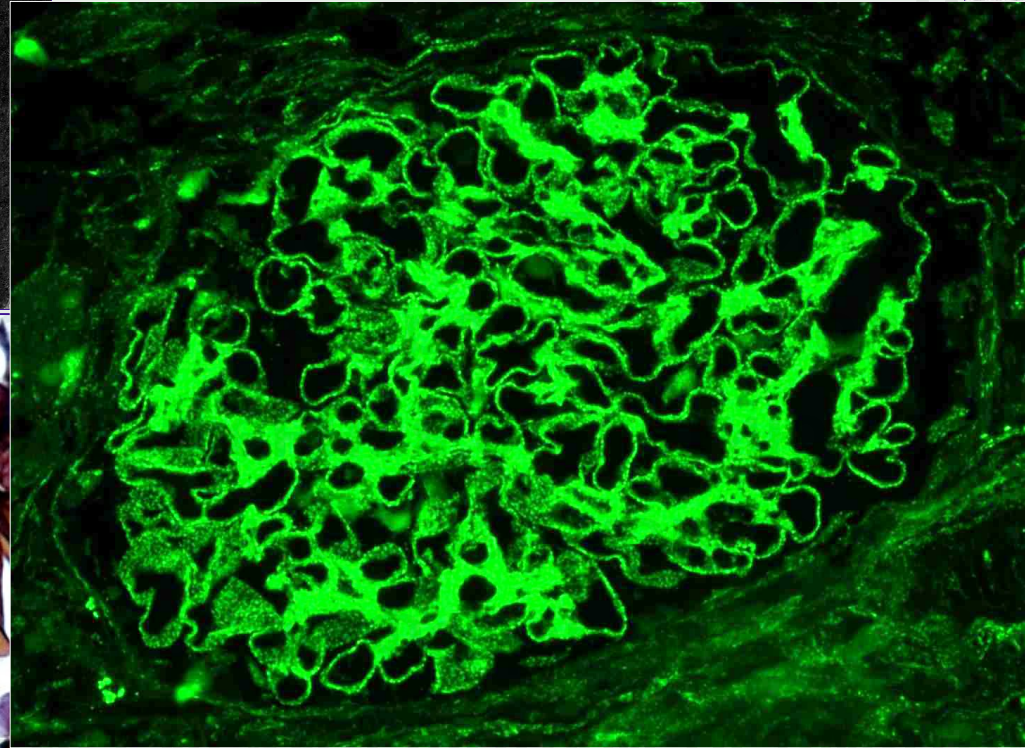
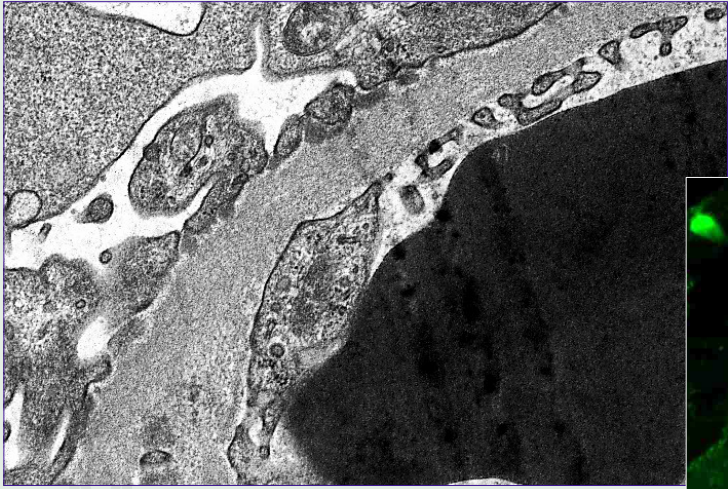


Класс V

Класс V & III/IV



# Класс V







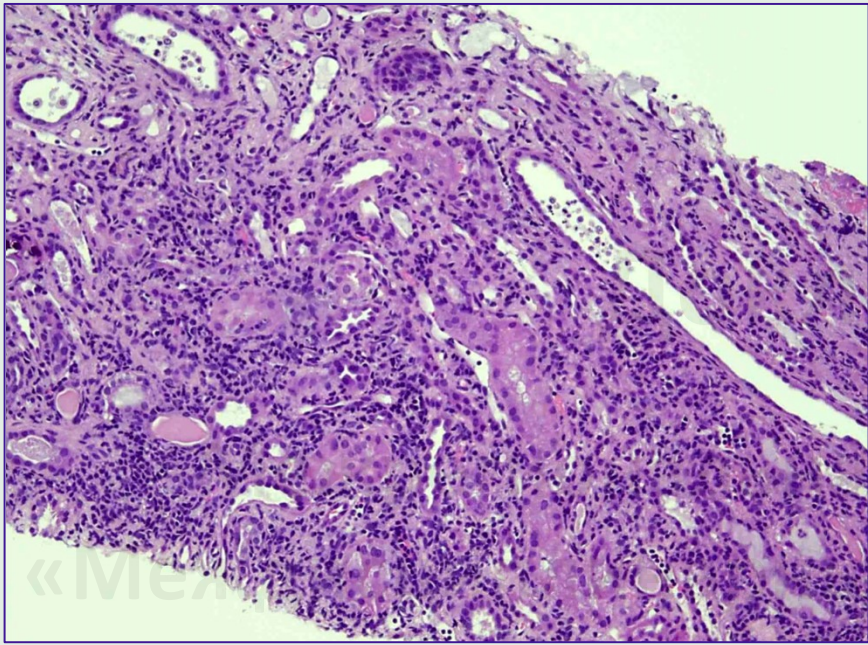
## Тубуло-интерстициальное воспаление при Lupus-нефрите

- Примерно в ½ случаев выявляется ТИН с ИК-депозитами
- Местный (тканевой) адаптивный иммунитет
- Преимущественно, В-лимфоциты и плазматические клетки
- Преимущественно, IgG/C3/C1q
- ГН и ТИН развиваются независимо друг от друга, но, тем не менее, ТИН крайне редко развивается изолированно (в отсутствие ГН)
- Умеренное и выраженное тубуло-интерстициальное воспаление – сильный предиктор развития тХПН
- Степень выраженности тубуло-интерстициального воспаления с позиции прогноза более важна, чем степень активности гломерулонефрита

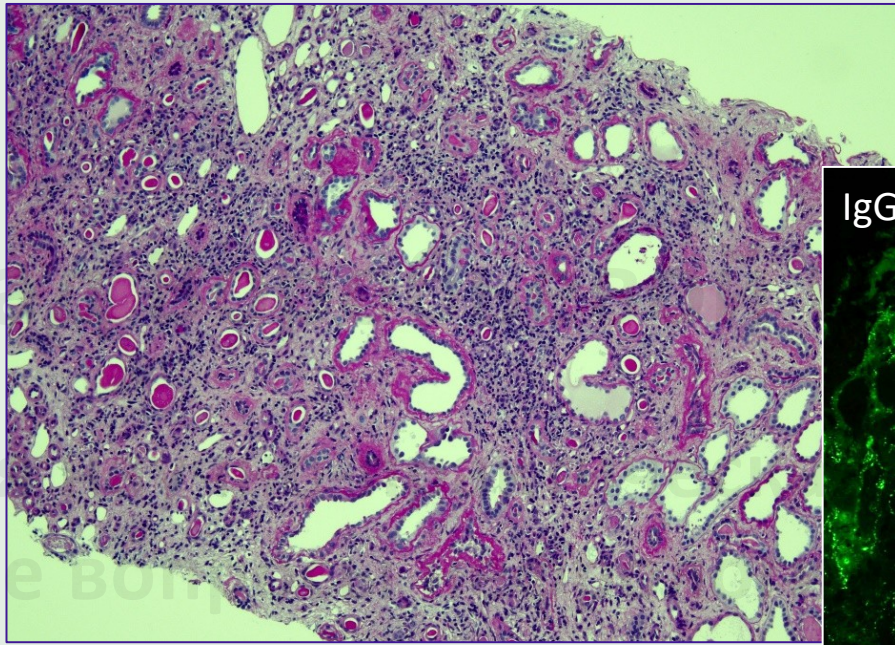
✓ *D'Agati VD, Stokes MB. Renal disease in SLE, MCTD, Sjogren's syndrome, and RA. In Jennette JC et al.: Heptinstall's pathology of the kidney. 7<sup>th</sup> ed. 2014; 570-572.*

✓ *Bajema IM, Wilhelmus S, Alpers CE, et al. Revision of the ISN/RPS classification for lupus nephritis. Kidney International. 2018; 93(4): 789-796.*

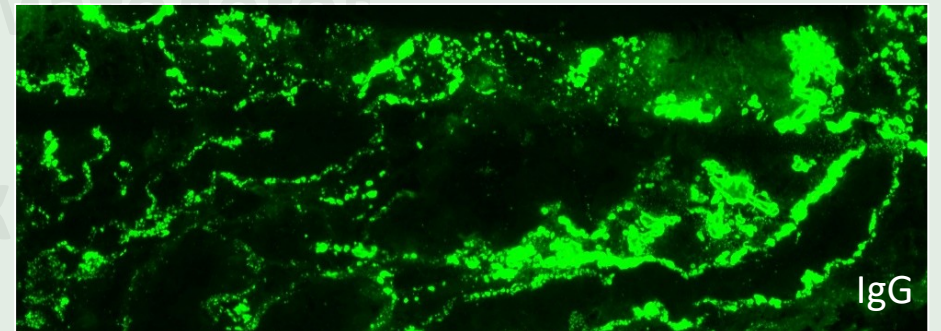
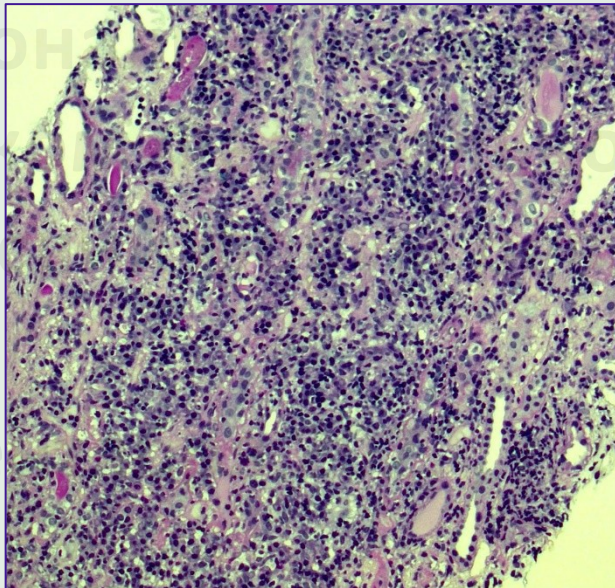
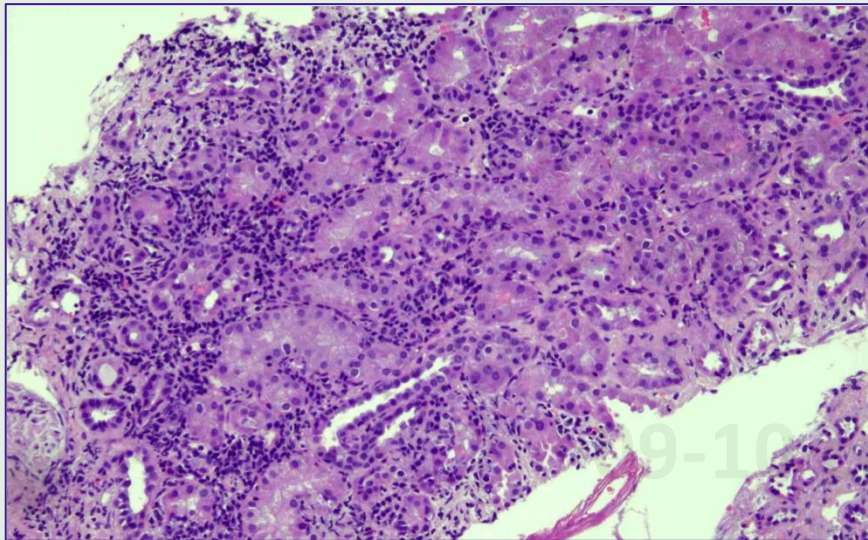
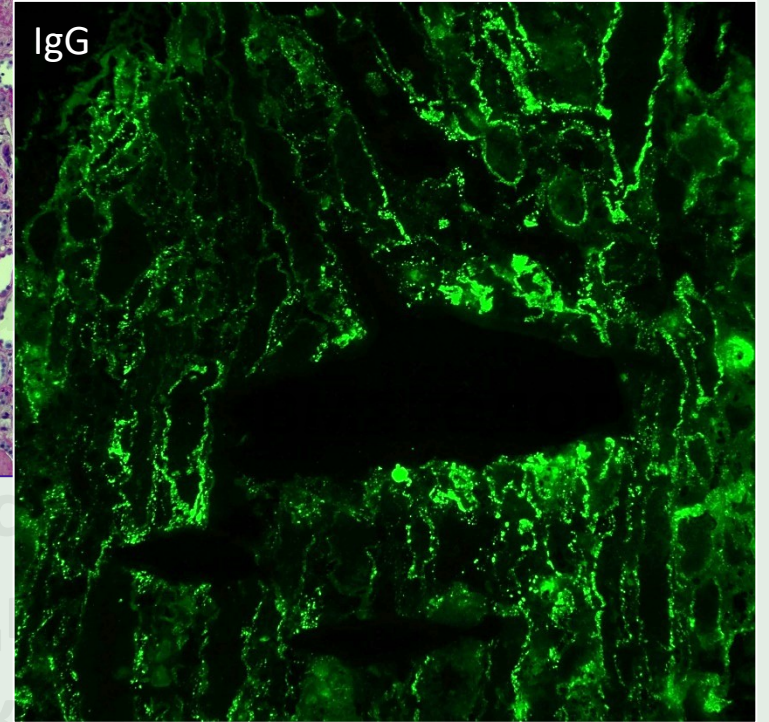




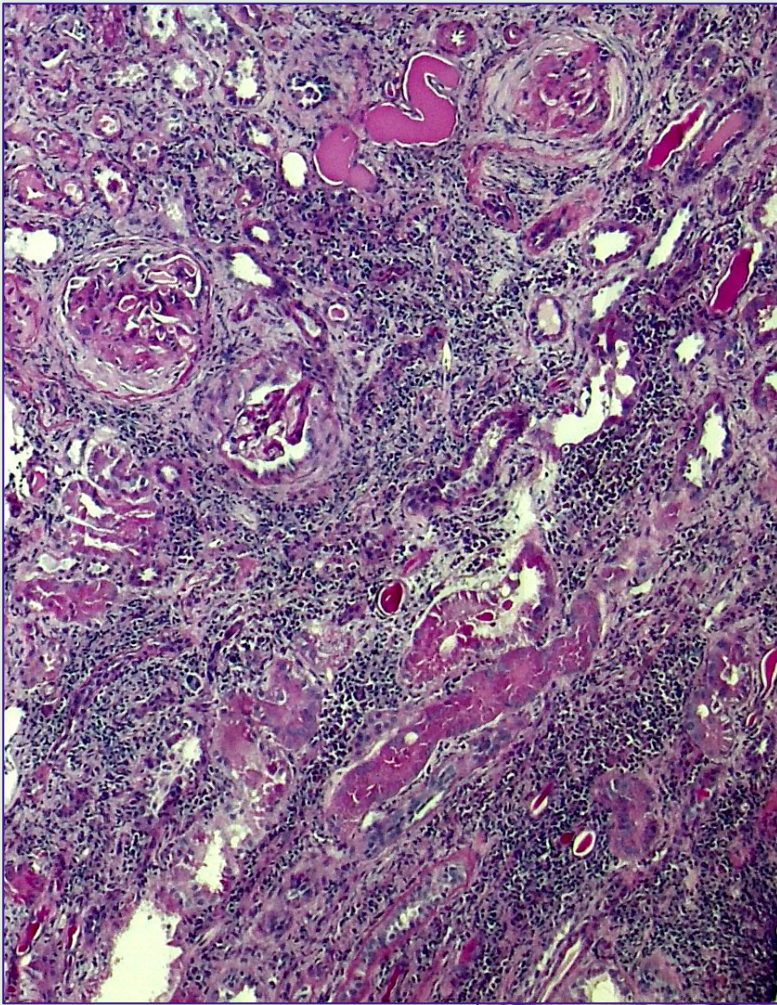
H&E, x100



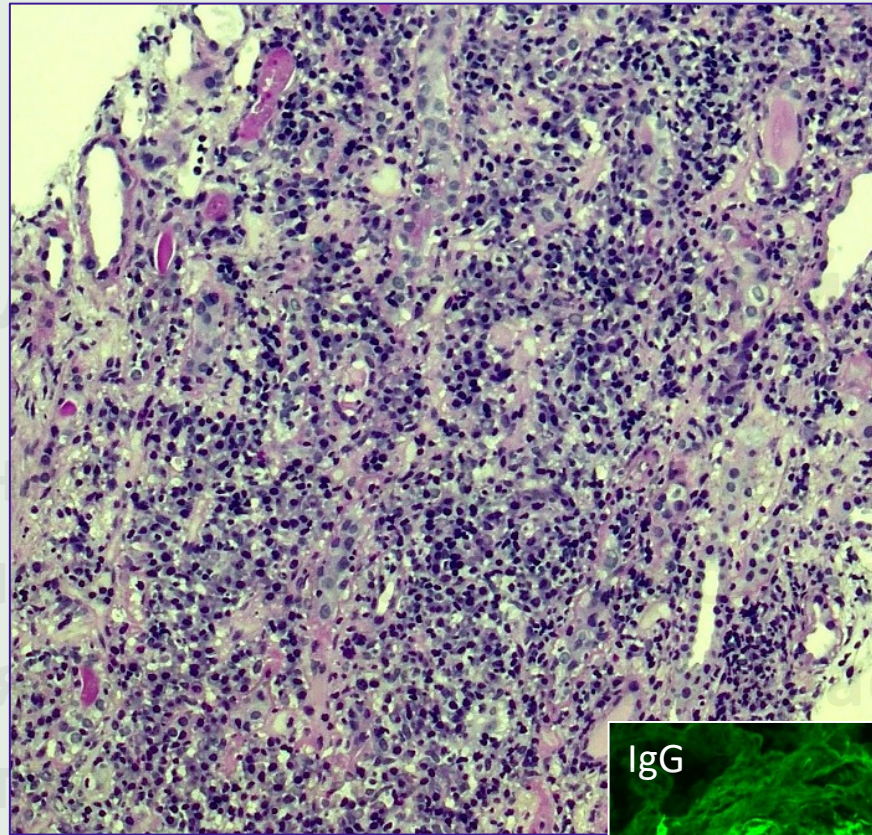
PAS, x100





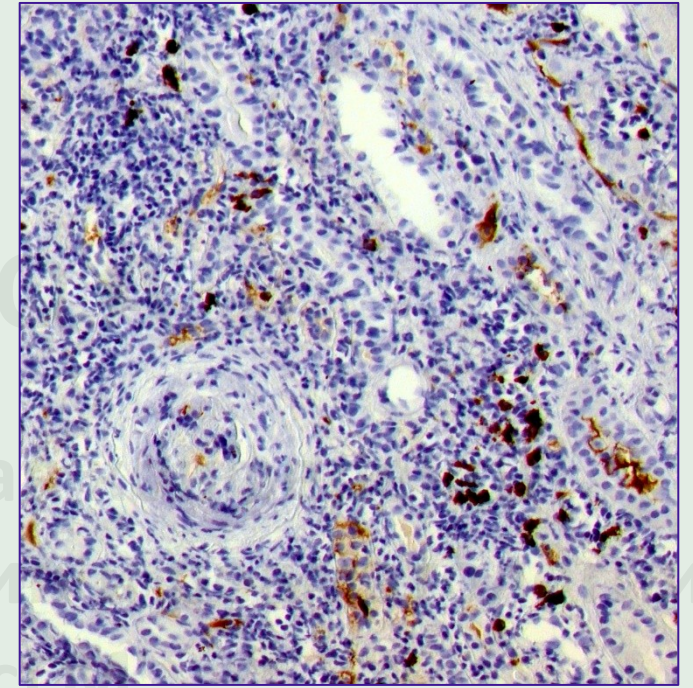


PAS, x40

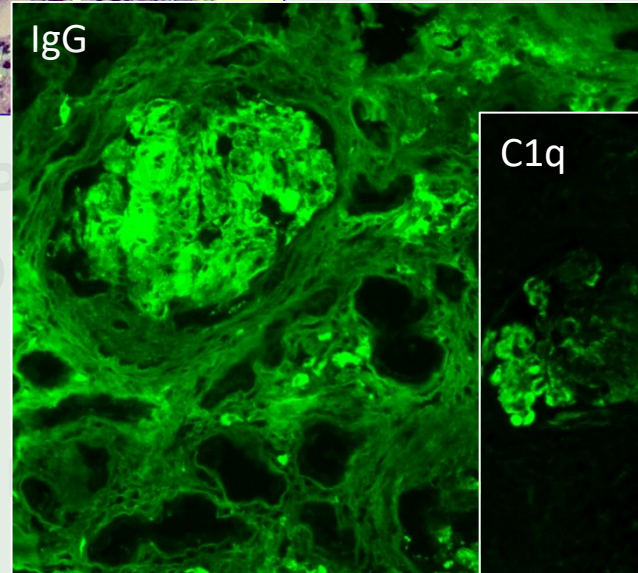


H&E, x400

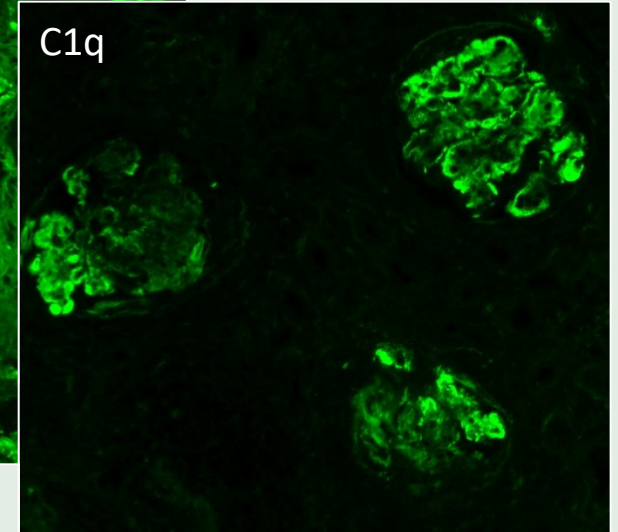
PAS, x100



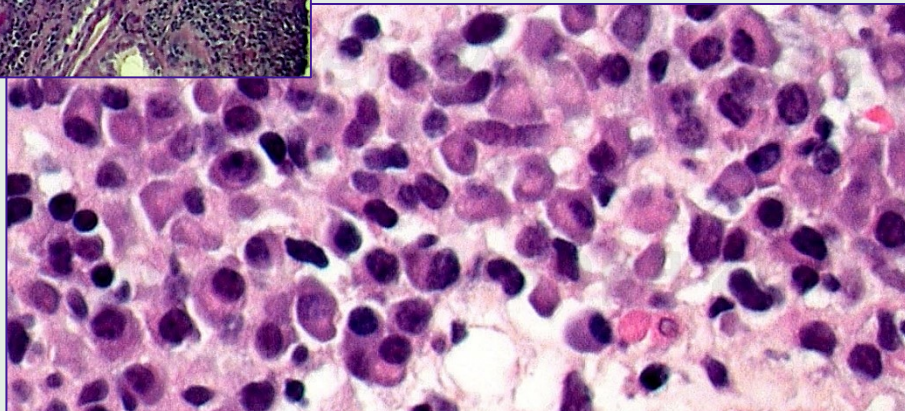
IgG4



IgG



C1q







## Overview of IgG4-Related Tubulointerstitial Nephritis and Its Mimickers

Hyeon Joo Jeong · Su-Jin Shin  
Beom Jin Lim

Department of Pathology, Yonsei University  
College of Medicine, Seoul, Korea

Received: October 7, 2015

Revised: November 6, 2015

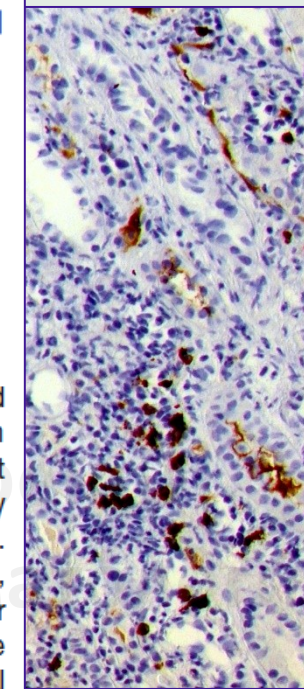
Accepted: November 9, 2015

### Corresponding Author

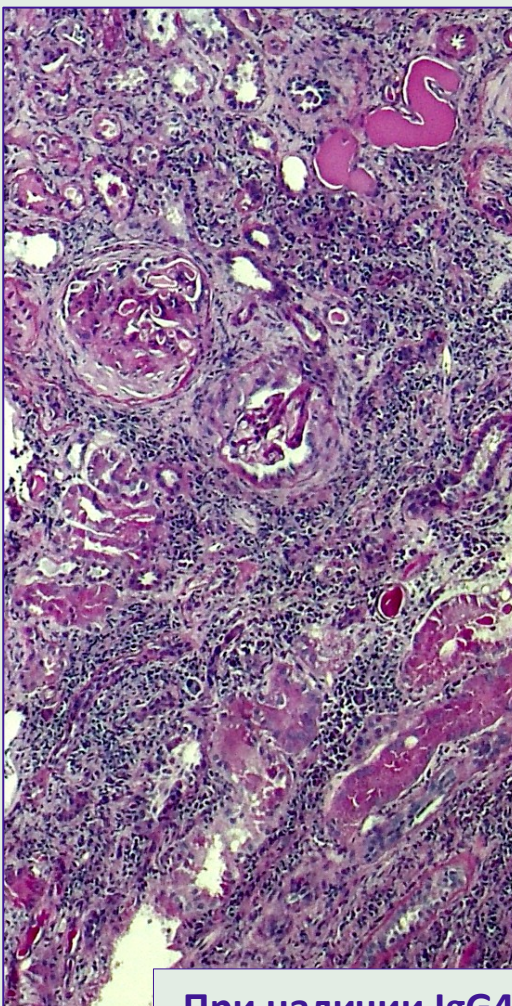
Hyeon Joo Jeong, MD  
Department of Pathology, Yonsei University College  
of Medicine, 50-1 Yonsei-ro, Seodaemun-gu, Seoul  
03722, Korea  
Tel: +82-2-2228-1766  
Fax: +82-2-362-0860  
E-mail: jeong10@yuhs.ac

Tubulointerstitial nephritis (TIN) is the most common form of renal involvement in IgG4-related disease. It is characterized by a dominant infiltrate of IgG4-positive plasma cells in the interstitium and storiform fibrosis. Demonstration of IgG4-positive plasma cells is essential for diagnosis, but the number of IgG4-positive cells and the ratio of IgG4-positive/IgG-positive plasma cells may vary from case to case and depending on the methods of tissue sampling even in the same case. IgG4-positive plasma cells can be seen in TIN associated with systemic lupus erythematosus, Sjögren syndrome, or anti-neutrophil cytoplasmic antibody-associated vasculitis, which further add diagnostic confusion and difficulties. To have a more clear view of IgG4-TIN and to delineate differential points from other TIN with IgG4-positive plasma cell infiltrates, clinical and histological features of IgG4-TIN and its mimickers were reviewed. In the rear part, cases suggesting overlap of IgG4-TIN and its mimickers and glomerulonephritis associated with IgG4-TIN were briefly described.

**Key Words:** IgG4-related disease; Lupus nephritis; Sjögren's syndrome; Anti-neutrophil cytoplasmic antibody-associated vasculitis; Glomerulonephritis, membranous



IgG4



PAS, x40

При наличии IgG4(+) тубуло-интерстициального нефрита всегда, и в первую очередь, необходимо рассматривать:

- Lupus-нефрит
- Синдром Sjögren's
- ANCA-вакулит с поражением почек

✓ Jeong HJ, Shin SJ, Lim BJ. Overview of IgG4-related tubulointerstitial nephritis and its mimickers. *Journal of Pathology and Translational Medicine*. 2016; 50: 26–36.







## Сосудистое повреждение при СКВ

- **ИК (+):**

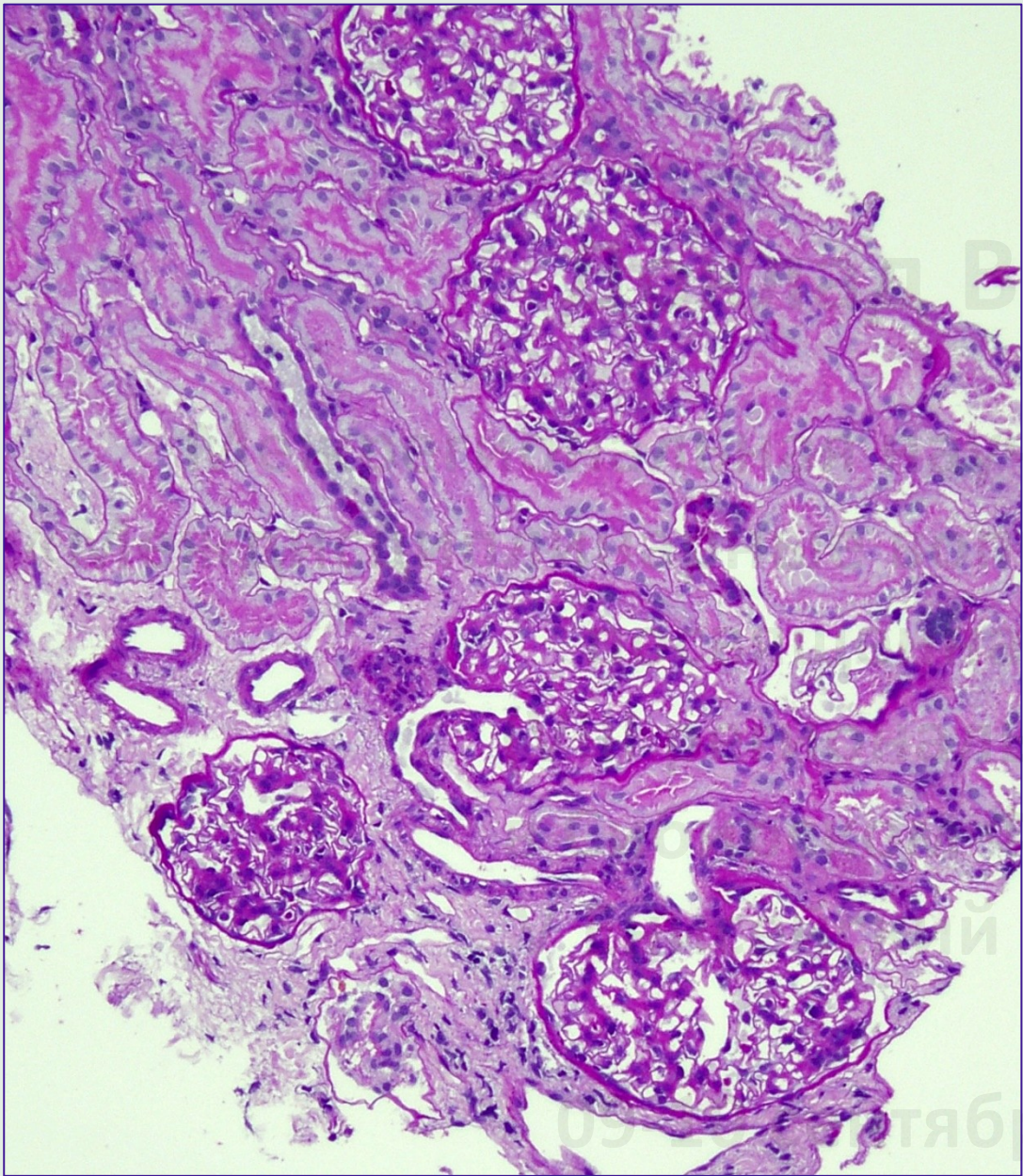
- Неосложненные иммунные комплексы (СМ – норма, ИФ – ИК-депозиты)
- **Lupus-vasculopatia** (ИК-депозиты, субэндотелиальный отек, инсудация)
- **Lupus-vasculitis** (ИК-депозиты, инфильтрация, некротические изменения)

- **ИК (-):** Гистологическая картина «**ТМА**» (в т. ч., вторичный АФС)

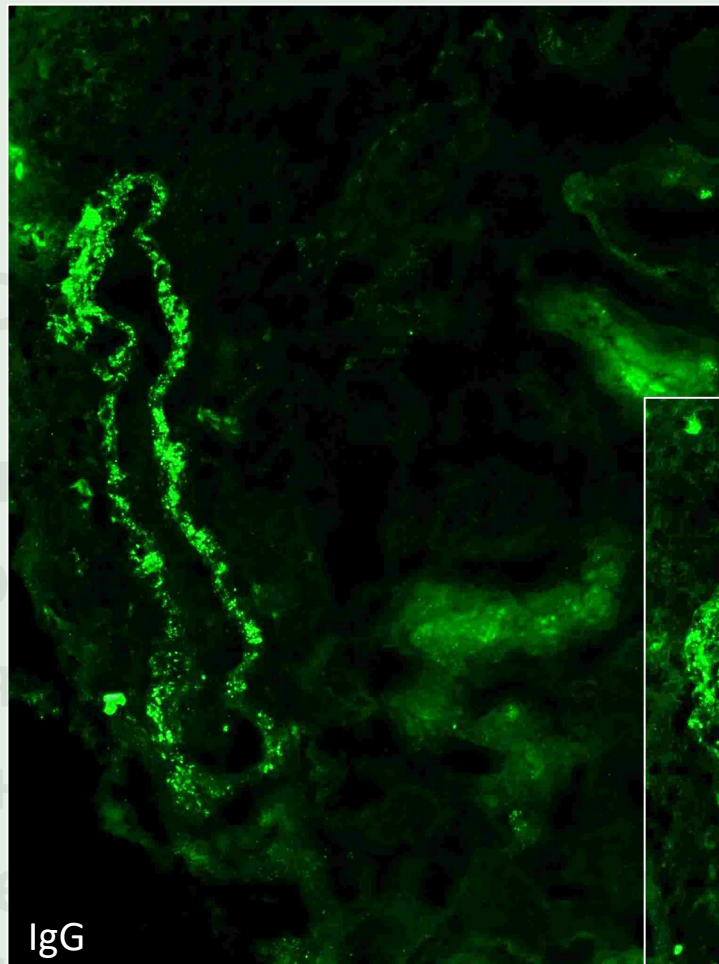
- Хронические фиброзно-склеротические изменения стенок сосудов

09-10 сентября 2021, г. Красноярск



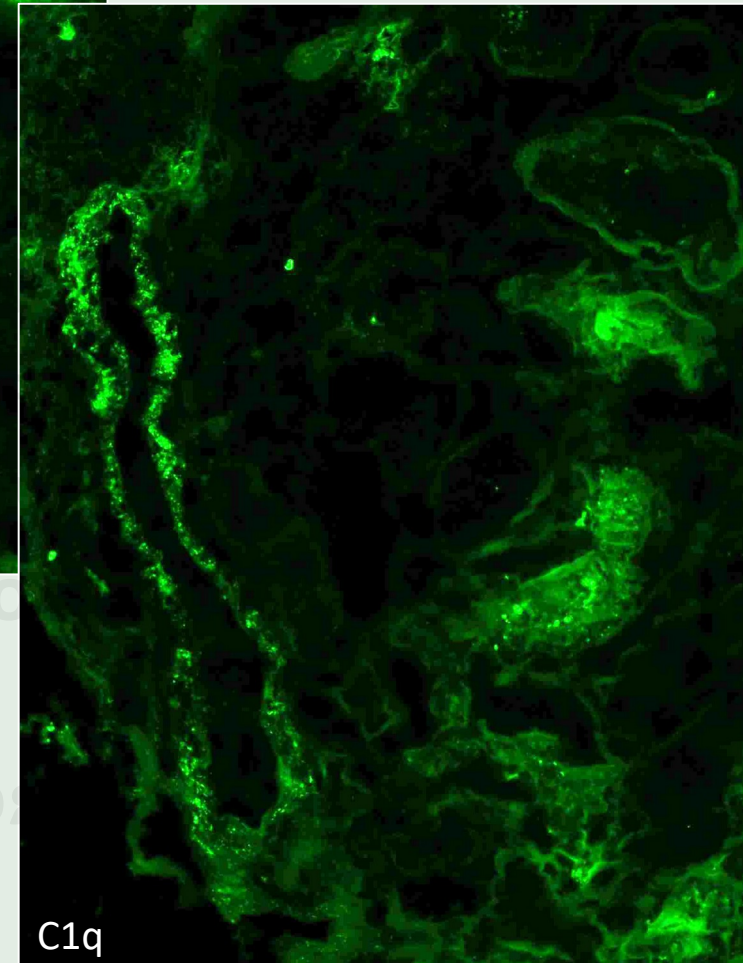


PAS, x100



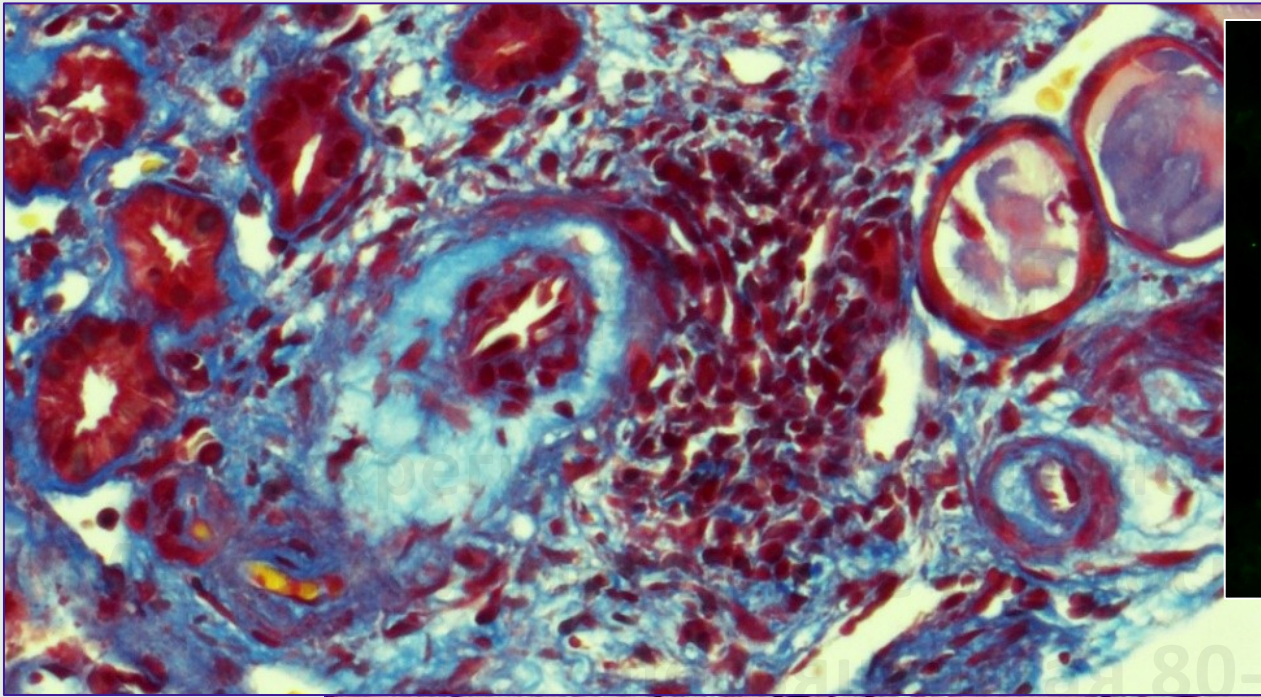
IgG

Неосложненные  
иммунные комплексы

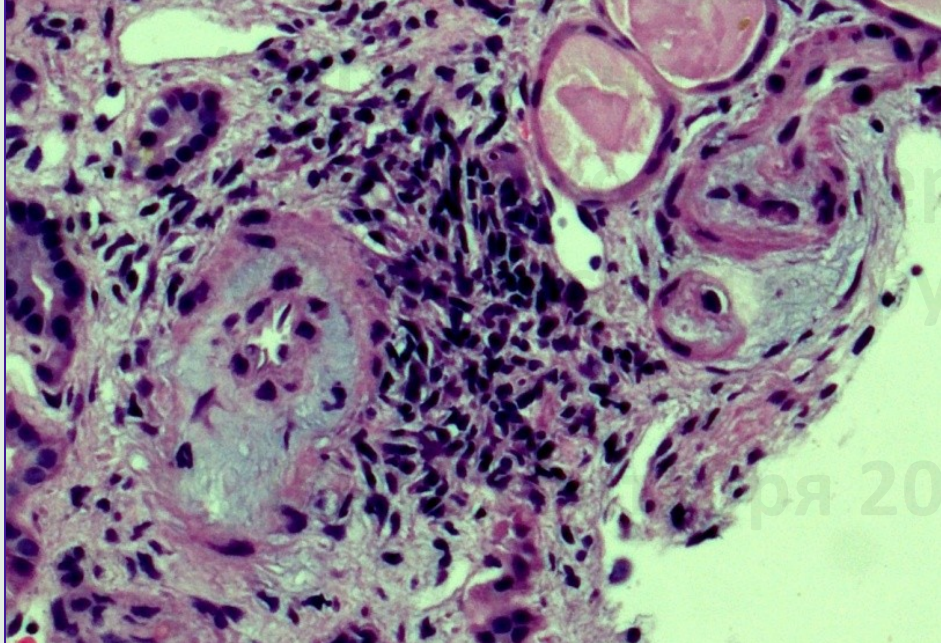


C1q

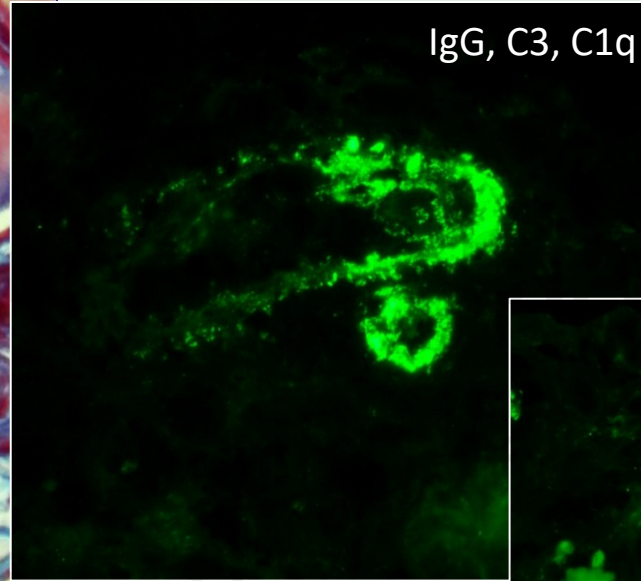




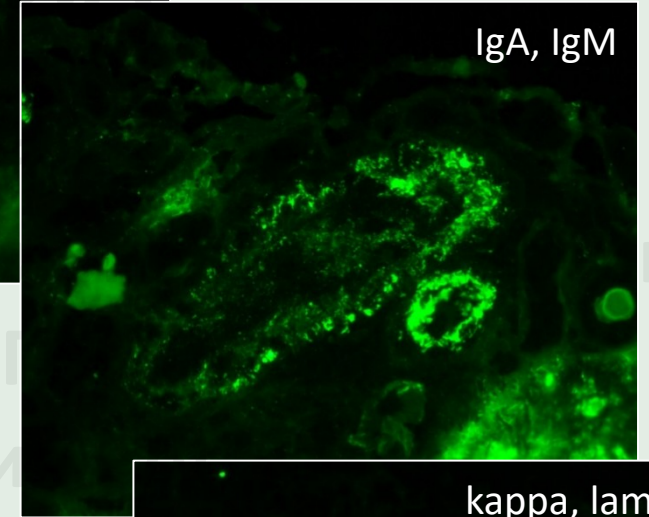
Masson's, x200



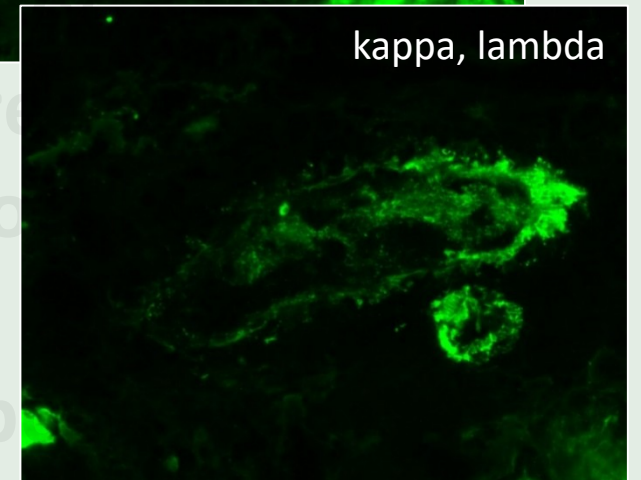
H&E, x200



IgG, C3, C1q



IgA, IgM



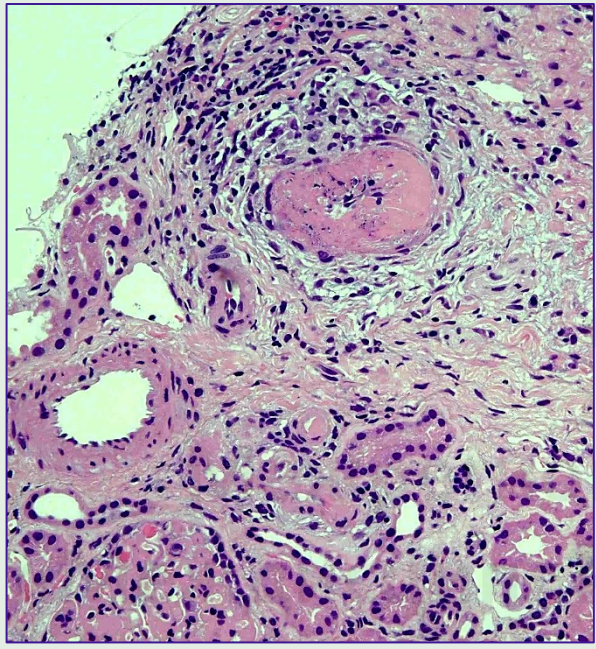
kappa, lambda

Lupus-vasкулопатия

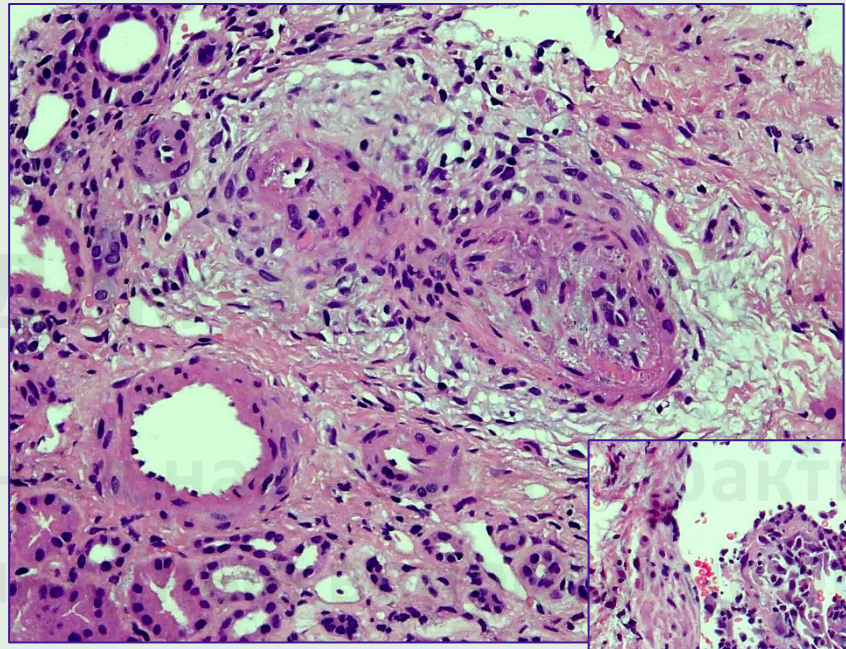




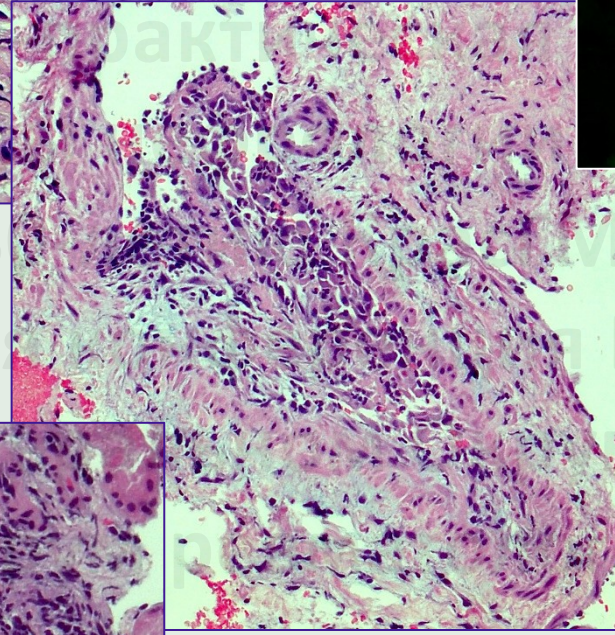
# Лупус-васкулит



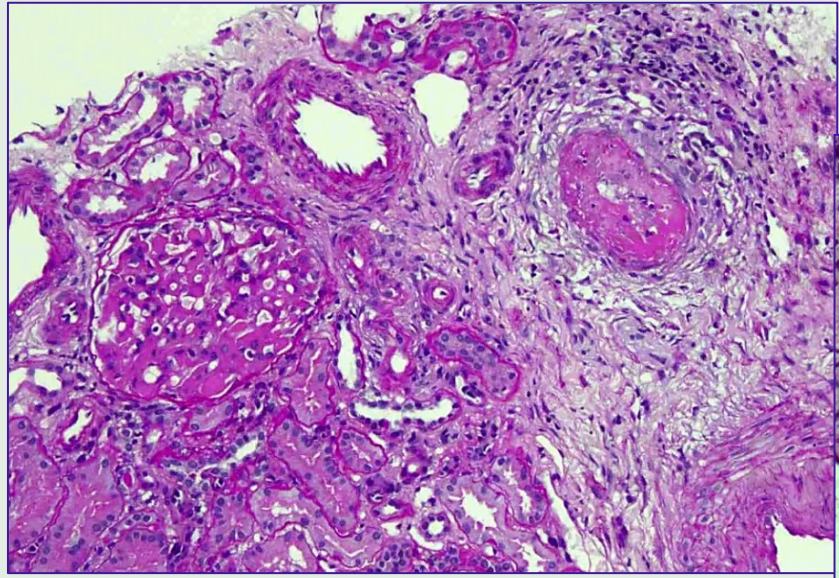
H&E, x200



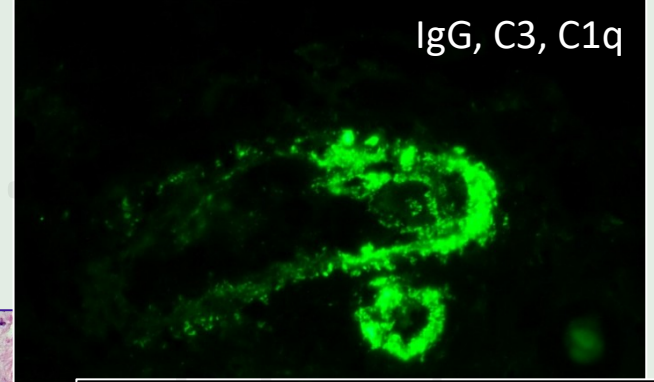
H&E, x200



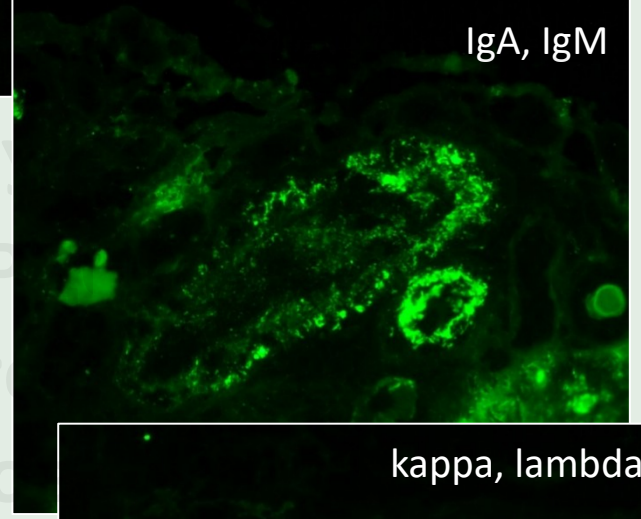
H&E, x100



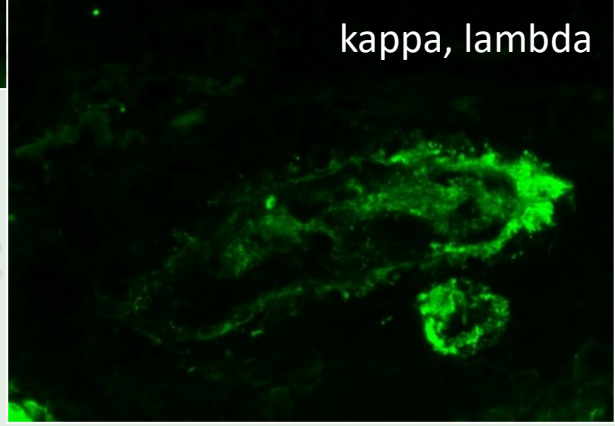
PAS, x100



IgG, C3, C1q



IgA, IgM

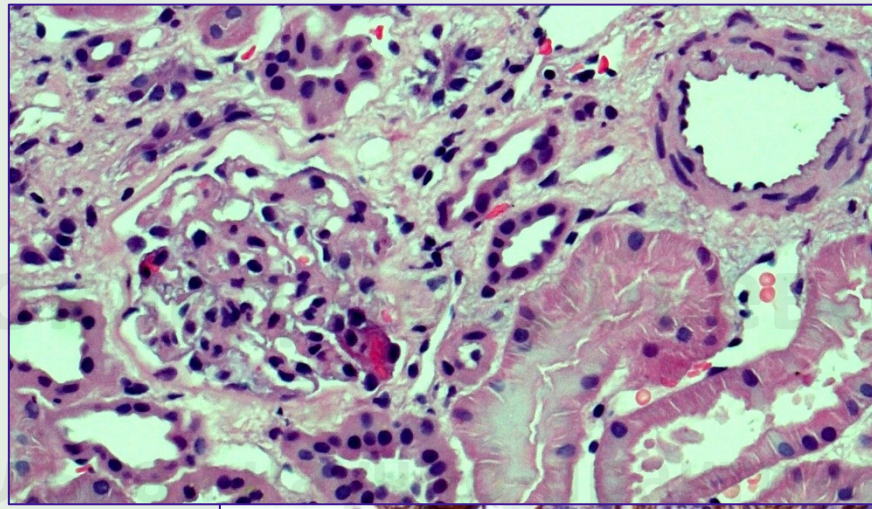
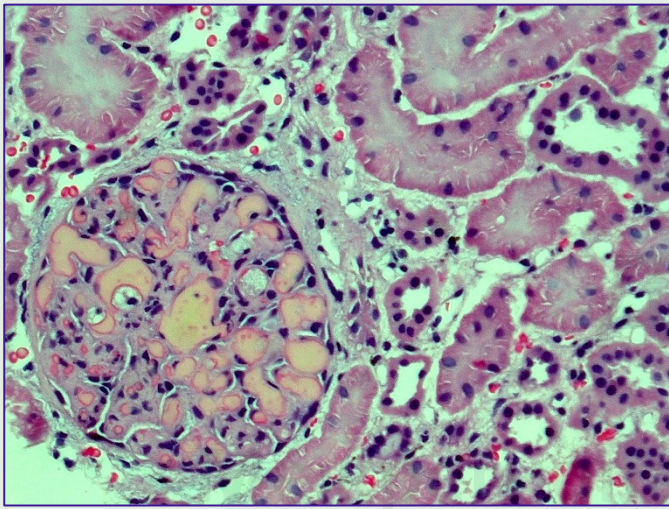


kappa, lambda

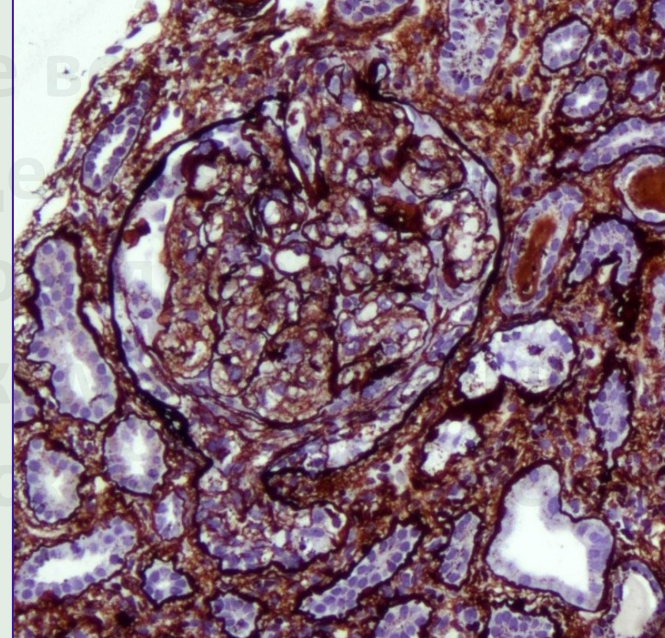
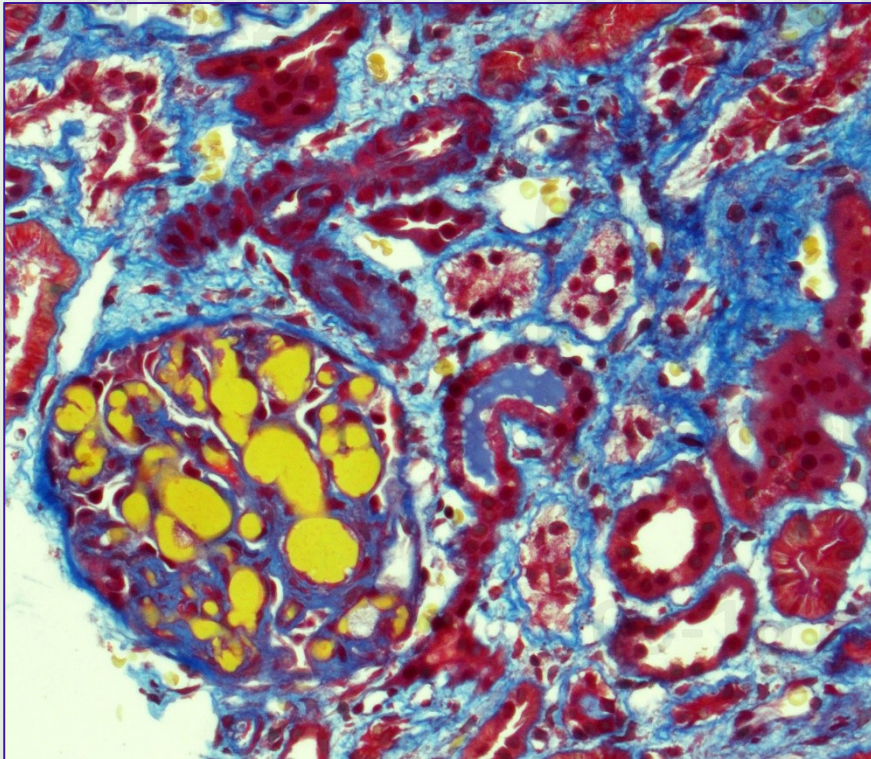




Lupus-«TMA»

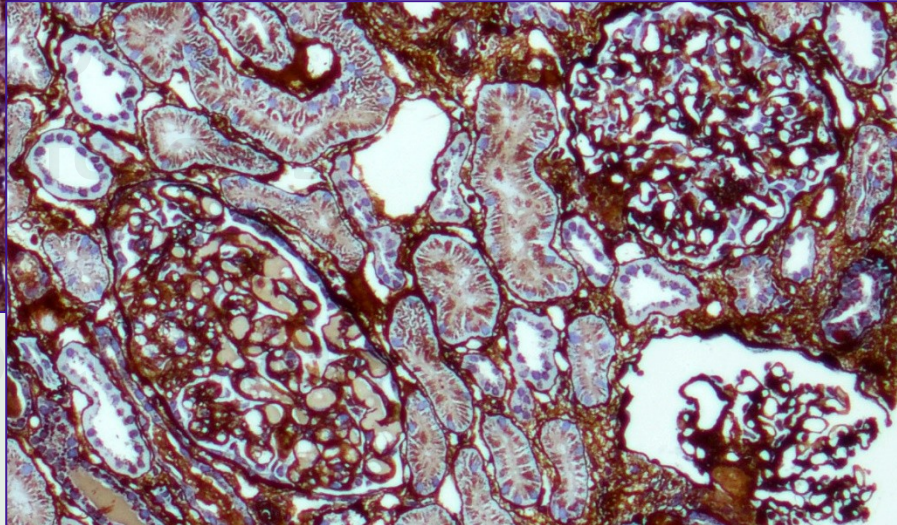
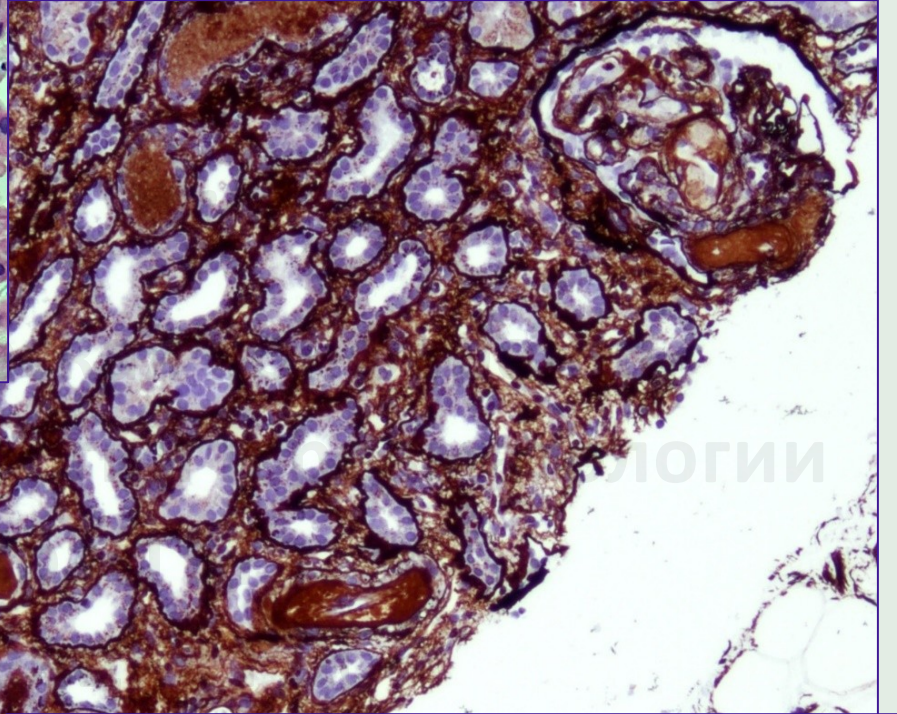


H&E, x200



Jones', x100

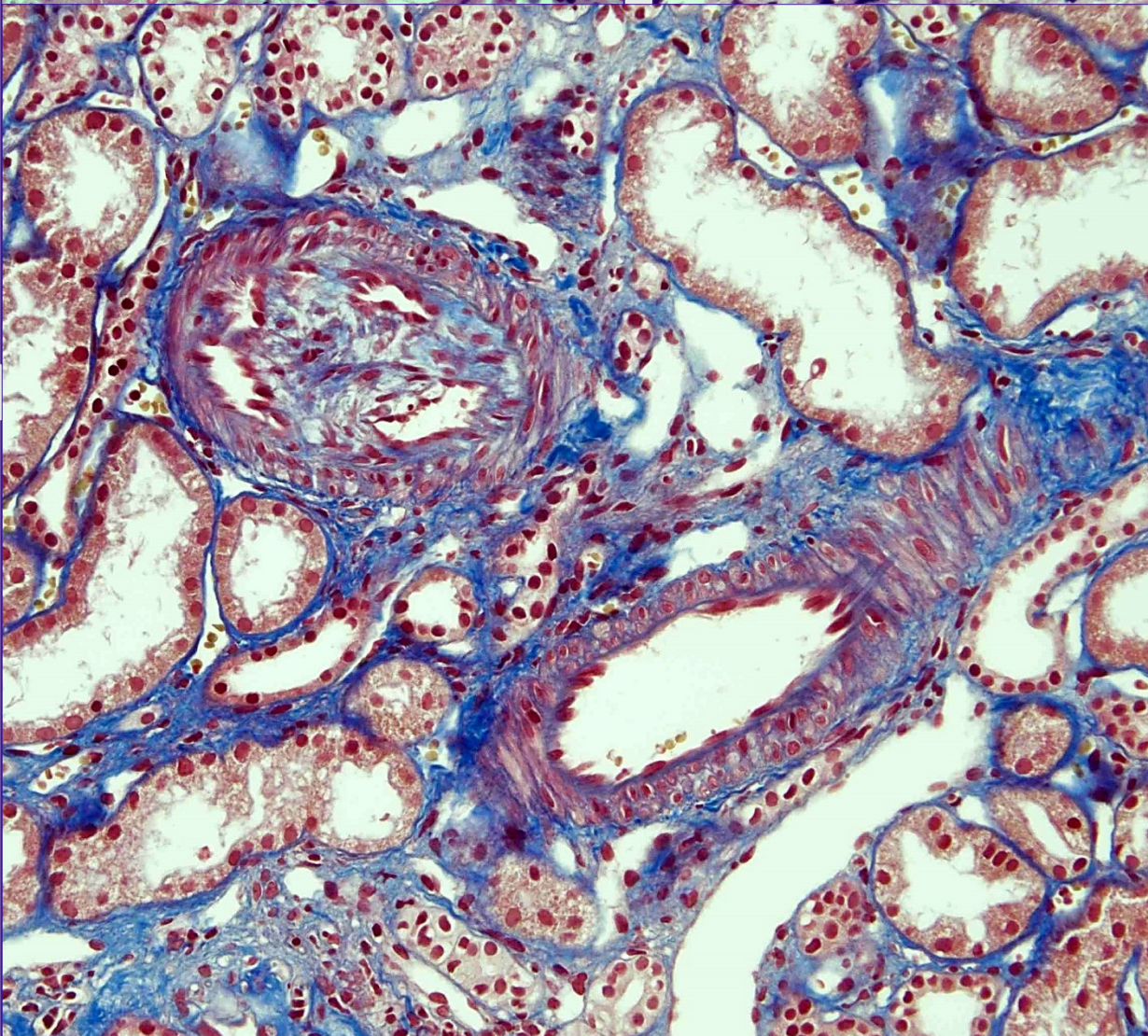
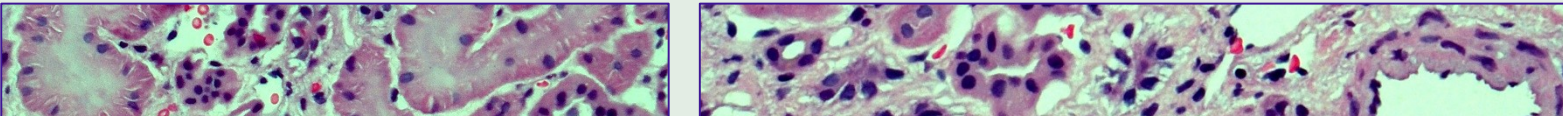
Masson's, x200



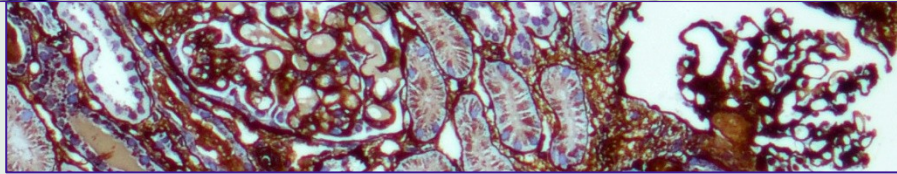
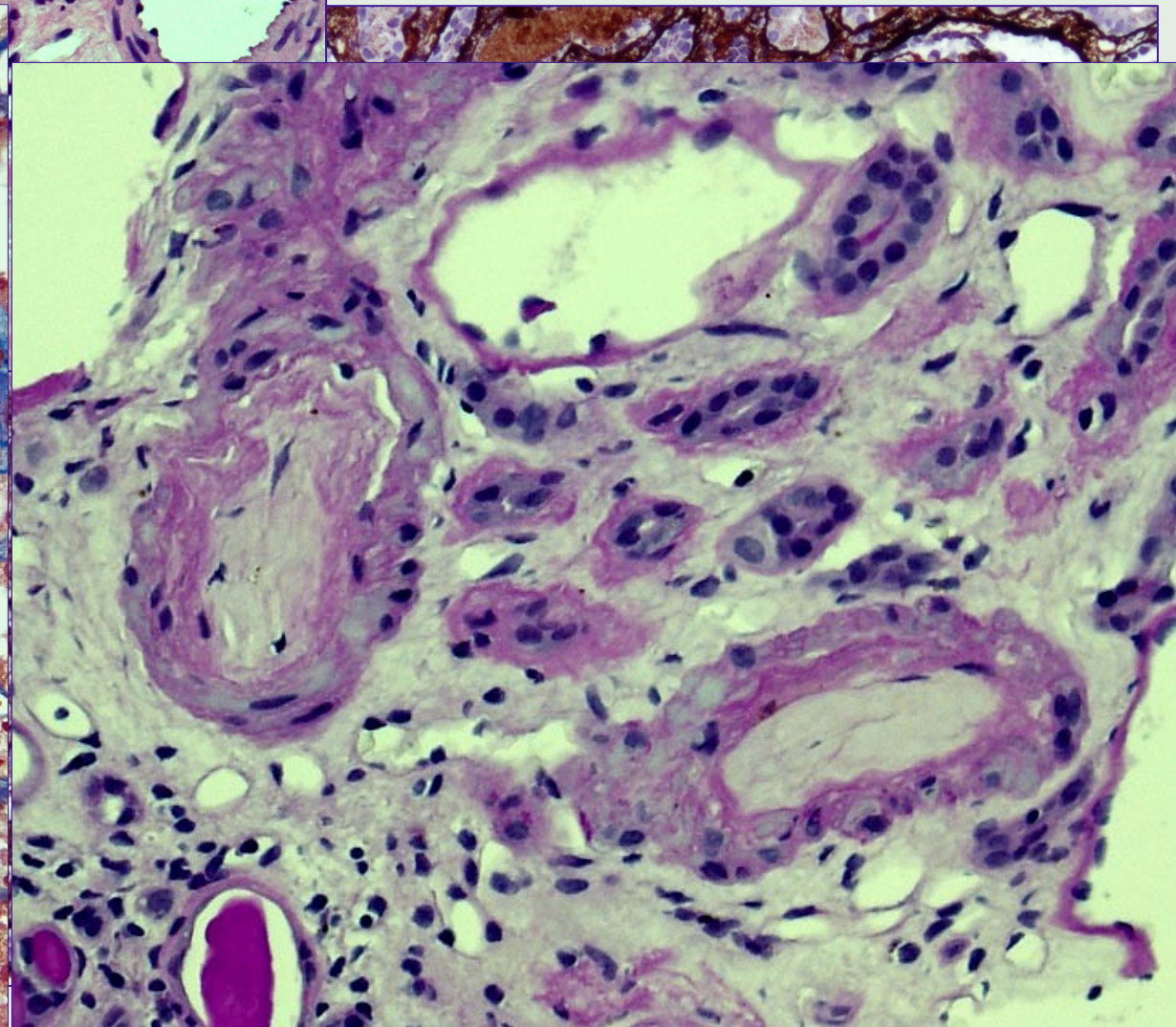




Lupus-«TMA»



Masson's, x200







## Lupus-подоцитопатия

### Критерии

- Верифицированный диагноз СКВ
- Полный нефротический синдром
- Гистологическая картина БМИ или ФСГС; +/- незначительная мезангиальная гиперклеточность
- Доказанное отсутствие субэндо- и субэпителиальных депозитов (СМ, ИФ, ЭМ)
- Ультраструктурно – диффузное распластывание малых отростков подоцитов

*D'Agati VD, Stokes MB. Renal disease in SLE, MCTD, Sjogren's syndrome, and RA. In Jennette JC et al.: Heptinstall's Path of the kidney. 7<sup>th</sup> ed. 2014; 609-610.*

*Sakhi H, Moktefi A, Bouachi K, et al. Podocyte injury in Lupus nephritis. Review. Journal Clinical Medicine. 2019, 8, 1340; doi:10.3390/jcm8091340*

*Olivia-Damaso N, Payan J, Oliva-Damaso E, et al. Lupus podocytopathy: an overview. Adv Chronic Kidney Dis. 2019; 26(5): 369-375.*

**2000-2013 гг / 3'750 Вх / 50 LP (1,33%):**

13 (≈25%) – «БМИ», М(-); 37 – М(+), в том числе 9 (≈20%) – «ФСГС»

Диффузное распластывание малых отростков подоцитов (>80%)

100% внепочечные проявления СКВ

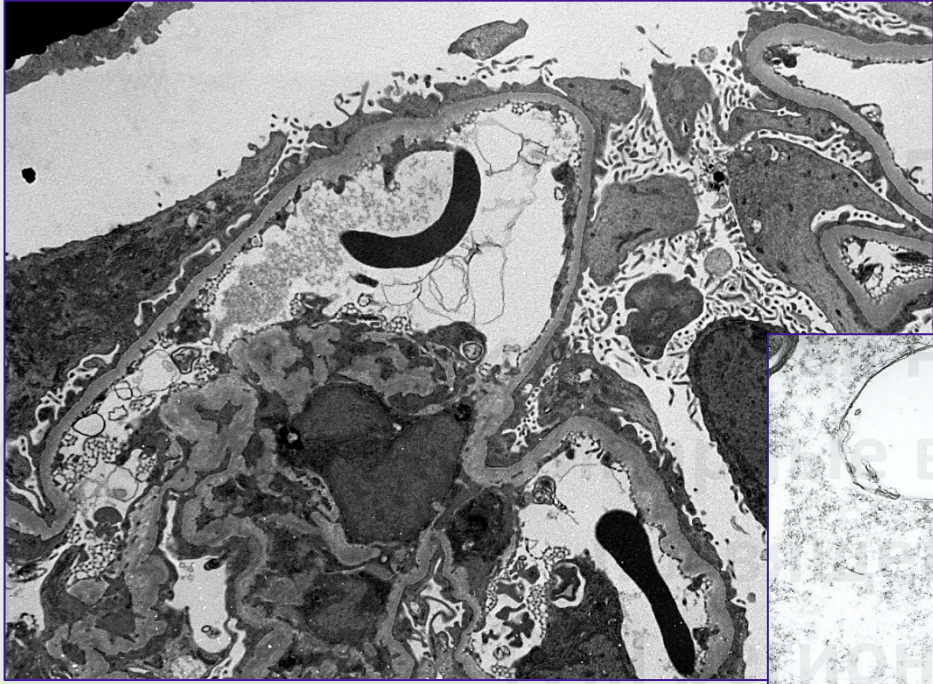
✓ *Hu W, Chen Y, Wang S, et al. Clinical-Morphological features and outcomes of lupus podocytopathy. Clin J Am Soc Nephrol. 2016 Apr 7; 11(4): 585–592.*





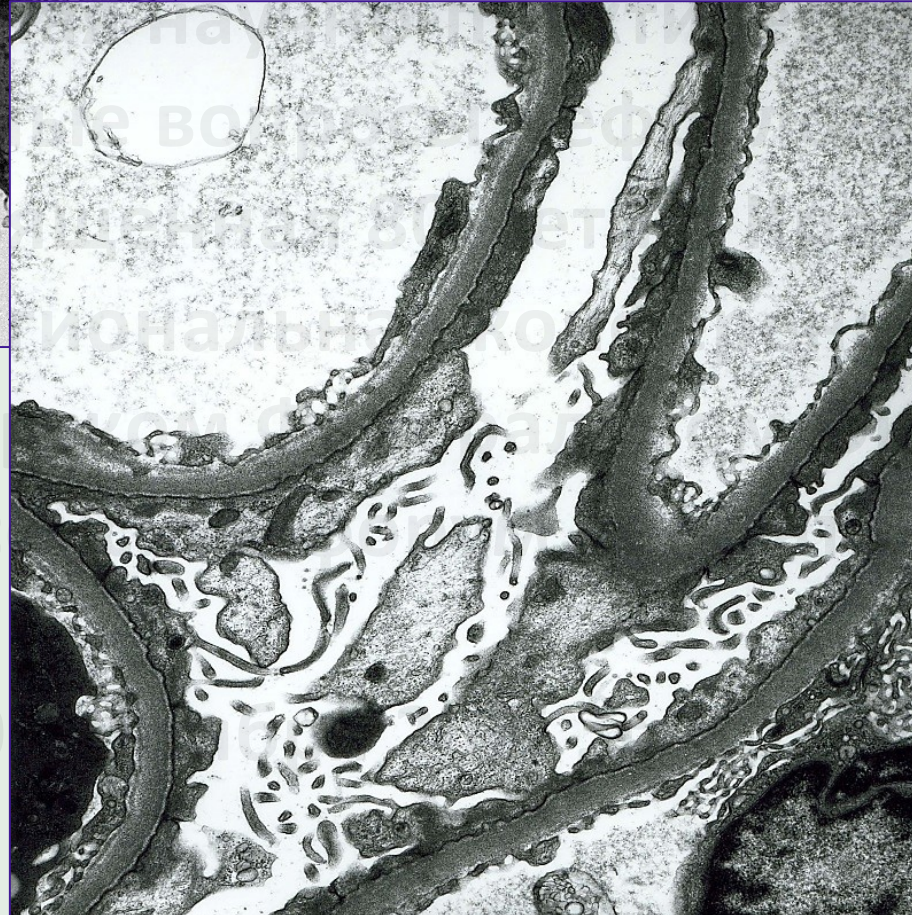
# Lupus-подоцитопатия

НОРМА

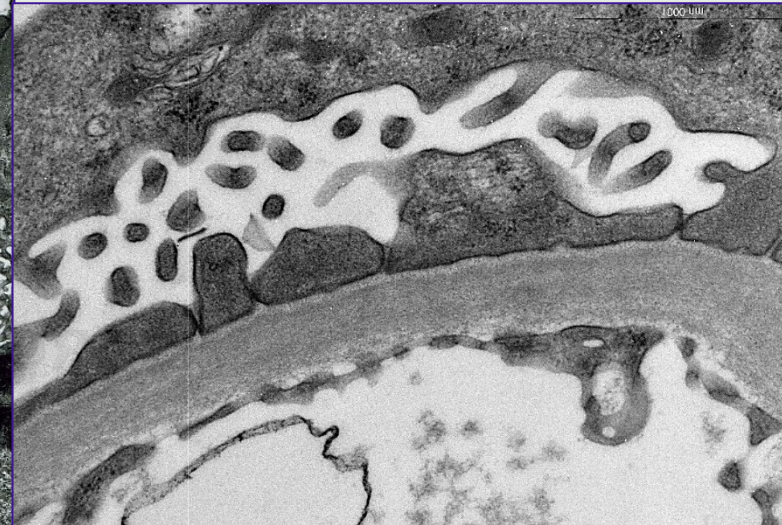


x3K

x5K



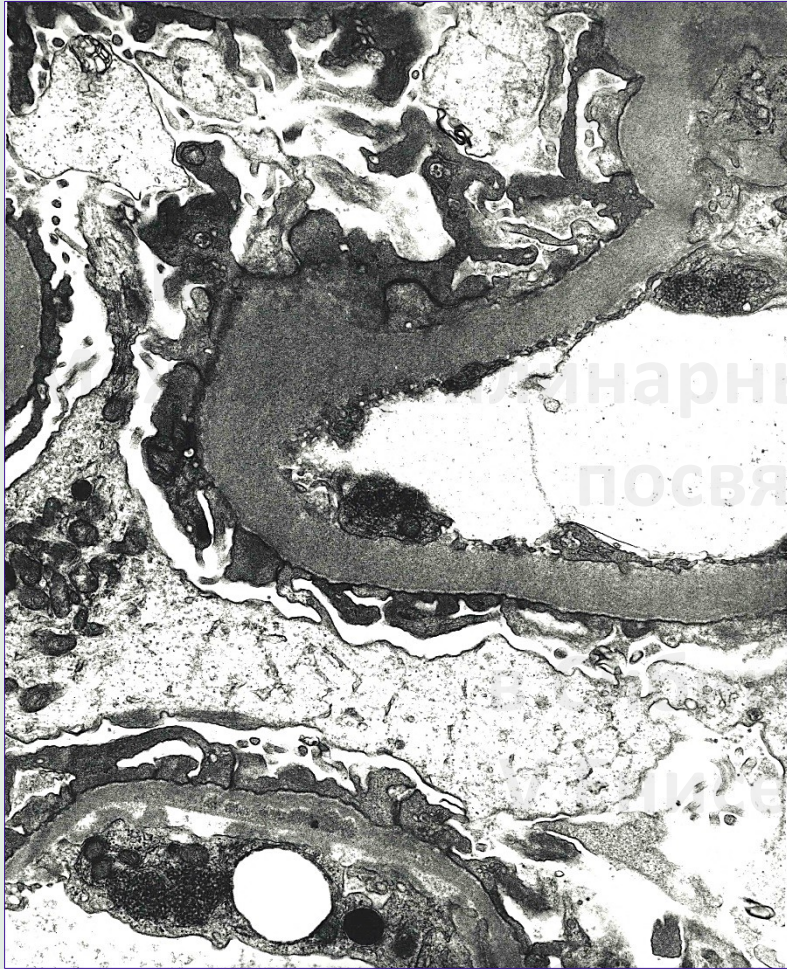
x7,5K



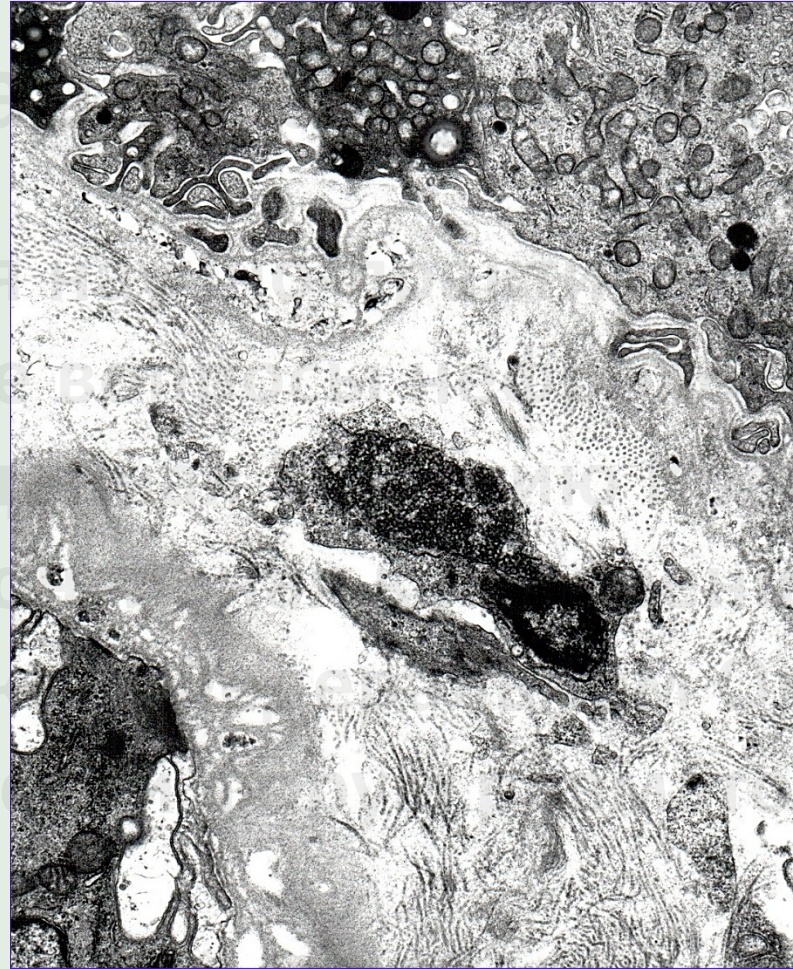




## Тубуло-ретикулярные структуры



x7,5K



x7,5K

Не являются специфичными

Основные состояния:

- СКВ
- HIV-инфекция
- Интерферон

09-10 сентября 2021, г. Красноярск





SPECIAL ARTICLE

Доклад Воробьевой О.А

# 2019 European League Against Rheumatism/American College of Rheumatology Classification Criteria for Systemic Lupus Erythematosus

Martin Aringer,<sup>1</sup> Karen Costenbader,<sup>2</sup> David Daikh,<sup>3</sup> Ralph Brinks,<sup>4</sup> Marta Mosca,<sup>5</sup> Rosalind Ramsey-Goldman,<sup>6</sup> Josef S. Smolen,<sup>7</sup> David Wofsy,<sup>8</sup> Dimitrios T. Boumpas,<sup>9</sup> Diane L. Kamen,<sup>10</sup> David Jayne,<sup>11</sup> Ricard Cervera,<sup>12</sup> Nathalie Costedoat-Chalumeau,<sup>13</sup> Betty Diamond,<sup>14</sup> Dafna D. Gladman,<sup>15</sup> Bevra Hahn,<sup>16</sup> Falk Hiepe,<sup>17</sup> Søren Jacobsen,<sup>18</sup> Dinesh Khanna,<sup>19</sup> Kirsten Lerstrøm,<sup>20</sup> Elena Massarotti,<sup>2</sup> Joseph McCune,<sup>21</sup> Guillermo Ruiz-Irastorza,<sup>22</sup> Jorge Sanchez-Guerrero,<sup>23</sup> Matthias Schneider,<sup>24</sup> Murray Urowitz,<sup>25</sup> George Bertsias,<sup>26</sup> Bimba F. Hoyer,<sup>27</sup> Nicolai Leuchten,<sup>1</sup> Chiara Tani,<sup>28</sup> Sara K. Tedeschi,<sup>2</sup> Zahi Touma,<sup>15</sup> Gabriela Schmajuk,<sup>3</sup> Branimir Anic,<sup>29</sup> Florence Assan,<sup>30</sup> Tak Mao Chan,<sup>31</sup> Ann Elaine Clarke,<sup>32</sup> Mary K. Crow,<sup>33</sup> László Czirják,<sup>34</sup> Andrea Doria,<sup>35</sup> Winfried Graninger,<sup>36</sup> Bernadett Halda-Kiss,<sup>34</sup> Sarfaraz Hasni,<sup>37</sup> Peter M. Izmirly,<sup>38</sup> Michelle Jung,<sup>32</sup> Gábor Kumánovics,<sup>34</sup> Xavier Mariette,<sup>39</sup> Ivan Padjen,<sup>29</sup> José M. Pego-Reigosa,<sup>40</sup> Juanita Romero-Diaz,<sup>41</sup> Íñigo Rúa-Figueroa Fernández,<sup>42</sup> Raphaèle Seror,<sup>30</sup> Georg H. Stummvoll,<sup>43</sup> Yoshiya Tanaka,<sup>44</sup> Maria G. Tektonidou,<sup>45</sup> Carlos Vasconcelos,<sup>46</sup> Edward M. Vital,<sup>47</sup> Daniel J. Wallace,<sup>48</sup> Sule Yavuz,<sup>49</sup> Pier Luigi Meroni,<sup>50</sup> Marvin J. Fritzler,<sup>32</sup> Ray Naden,<sup>51</sup> Thomas Dörner,<sup>17</sup> and Sindhu R. Johnson<sup>52</sup>

**SPECIAL ARTICLE**

**2019 European  
College of Rheumatology  
Lupus Erythematosus  
Classification Criteria**

Martin Aringer,<sup>1</sup> Karen Costello,<sup>2</sup> Josef S. Smolen,<sup>7</sup> David Wolfe,<sup>3</sup> Nathalie Costedoat-Chalumeau,<sup>4</sup> Søren Jacobsen,<sup>18</sup> Dinesh Khanna,<sup>5</sup> Guillermo Ruiz-Irastorza,<sup>22</sup> J. Bimba F. Hoyer,<sup>27</sup> Nicolai Leckley,<sup>6</sup> Branimir Anic,<sup>29</sup> Florence Assouline,<sup>30</sup> Andrea Doria,<sup>35</sup> Winfried Gerstl,<sup>31</sup> Gábor Kumánovics,<sup>34</sup> Xavier Marián-Aragón,<sup>32</sup> Rúa-Figueroa Fernández,<sup>42</sup> Carlos Vasconcelos,<sup>46</sup> Edward M. Aronoff,<sup>33</sup> Ray Naden,<sup>51</sup> Thomas Dörner,<sup>36</sup>

Entry criterion	
Antinuclear antibodies (ANA) at a titer of $\geq 1:80$ on HEp-2 cells or an equivalent positive test (ever)	
↓	
If absent, do not classify as SLE If present, apply additive criteria	
↓	
Additive criteria	
Do not count a criterion if there is a more likely explanation than SLE. Occurrence of a criterion on at least one occasion is sufficient. SLE classification requires at least one clinical criterion and $\geq 10$ points. Criteria need not occur simultaneously. Within each domain, only the highest weighted criterion is counted toward the total score.	
Clinical domains and criteria	Weight
<b>Constitutional</b>	
Fever	2
<b>Hematologic</b>	
Leukopenia	3
Thrombocytopenia	4
Autoimmune hemolysis	4
<b>Neuropsychiatric</b>	
Delirium	2
Psychosis	3
Seizure	5
<b>Mucocutaneous</b>	
Non-scarring alopecia	2
Oral ulcers	2
Subacute cutaneous OR discoid lupus	4
Acute cutaneous lupus	6
<b>Serosal</b>	
Pleural or pericardial effusion	5
Acute pericarditis	6
<b>Musculoskeletal</b>	
Joint involvement	6
<b>Renal</b>	
Proteinuria $>0.5g/24h$	4
Renal biopsy Class II or V lupus nephritis	8
Renal biopsy Class III or IV lupus nephritis	10
Total score:	
↓	

Classify as Systemic Lupus Erythematosus with a score of 10 or more if entry criterion fulfilled.



**American  
College of Rheumatology  
Criteria for Systemic  
Lupus Erythematosus**

Alind Ramsey-Goldman,<sup>6</sup> Ricard Cervera,<sup>12</sup> Falk Hiepe,<sup>17</sup> June,<sup>21</sup> Rowitz,<sup>25</sup> George Bertsias,<sup>26</sup> Gabriela Schmajuk,<sup>3</sup> László Czirják,<sup>34</sup> M. Izmirly,<sup>38</sup> Michelle Jung,<sup>32</sup> Romero-Diaz,<sup>41</sup> Íñigo María G. Tektonidou,<sup>45</sup> Aronoff,<sup>50</sup> Marvin J. Fritzler,<sup>32</sup>





НАЦИОНАЛЬНЫЙ ЦЕНТР  
КЛИНИЧЕСКОЙ МОРФОЛОГИЧЕСКОЙ ДИАГНОСТИКИ

Доклад Воробьевой О.А

**БЛАГОДАРЮ ЗА ВНИМАНИЕ!**

Все виды морфологической диагностики

молекулярно-генетические исследования

